

1                                   **IN THE SUPREME COURT OF THE**  
2                                   **STATE OF ARIZONA**

3                   Roberto Torres, et al.;

4                                   Plaintiffs/Appellees,

5                   vs.

6                   JAI Dining Services (Phoenix) Inc.;

7                                   Defendants/Appellants.

Arizona Supreme Court Case No.  
CV-22-0142-PR

Court of Appeals - Division One  
No. 1 CA-CV 19-0544

Maricopa County Superior Court  
Case No. CV 2016-016688

**AMICUS CURIAE BRIEF OF  
HOMICIDE SURVIVORS,  
INC.**

11

12                                   **MICK LEVIN, ESQ. (SBN 021891)**  
13                                   **ALEXANDRA VAN DUFFELEN (SBN 036437)**  
14                                   **MICK LEVIN, P.L.C.**  
                                  micklewin@mlplc.com  
                                  alex@mlplc.com  
                                  3401 N 32<sup>nd</sup> Street  
15                                   Phoenix, AZ 85018  
16                                   Ph: 480-865-3051 / 866-707-7222  
                                  Fax: 800-385-1684

17                                   **NOAH J. VAN AMBURG, ESQ. (SBN 022737)**  
18                                   **VAN AMBURG LAW FIRM, P.L.L.C.**  
                                  noahv@vanamburglaw.com  
                                  2315 E. Speedway Blvd.  
19                                   Tucson, AZ 85719  
20                                   Ph: 520-323-4559  
                                  Fax: 520-323-4595

21                                   *Co-Counsel for Amicus Curiae Homicide Survivors Inc.*

**TABLE OF CONTENTS**

1  
2  
3  
4  
5  
6  
7  
8  
9  
10  
11  
12  
13  
14  
15  
16  
17  
18  
19  
20  
21

Table Of Authorities .....3

Interest Of The Amicus Curiae .....5

Issues On Review .....7

Introduction .....7

Reasons Why the Arizona Supreme Court Should Grant the Petition for Review ...9

    A.    A “dramshop claim” is a “right of action to recover damages for injuries” protected by Article 18, Section 6 of the Arizona State Constitution .....9

    B.    The Legislature cannot abolish common law “dramshop claims” .....15

Conclusion .....17

Appendix .....19

1 **TABLE OF AUTHORITIES**

2 **Arizona State Constitutional Provisions**

3 Ariz. Const. art, 18, § 6.....15

4 **Arizona Authorities**

5 *Andrews, Ex Rel. Woodard v. Eddie’s Place*, 199 Ariz. 240 (App. 2000).....9

6 *Collier v. Stamatis*, 63 Ariz. 285 (1945). .....11

7 *Dickey v. City of Flagstaff*, 197 Ariz. 422 (App. 1999) .....10

8 *Gipson v. Kasey*, 214 Ariz. 141 (2007) ..... 10, 14

9 *Guerra v. State*, 237 Ariz. 183 (2015).....14

10 *Lewis v. Wolf*, 122 Ariz. 567 (App. 1979).....12

11 *Maricopa and Phoenix Salt River Valley R.R. Co. v. Dean*, 7 Ariz. 104  
12 (1900) .....10

13 *McDowell v. Davis*, 104 Ariz. 69 (1968).....13

14 *McFarlin v. Hall*, 127 Ariz. 220 (1980).....12

15 *Ontiveros v. Borak*, 136 Ariz. 500 (1983)..... 10, 12, 13, 14

16 *Pierce v. Lopez*, 16 Ariz. App. 54 (1971).....12

17 *Pratt v. Daly*, 55 Ariz. 535 (1940)..... 10, 11

18 *Quiroz v. ALCOA Inc.*, 243 Ariz. 560 (2018)..... 9, 15

19 *Rumery v. Baier*, 231 Ariz. 275 (2013) .....9

20 *Thompson v. Bryson*, 19 Ariz. App. 134 (1973).....12

21 *Torres v. Jai Dining Servs. (Phx.), Inc.*, 508 P.3d 1148 (App. 2022)..... 9, 17

1  
2  
3  
4  
5  
6  
7  
8  
9  
10  
11  
12  
13  
14  
15  
16  
17  
18  
19  
20  
21

*Vallentine v. Azar*, 8 Ariz. App. 247 (1968).....12

*Young ex rel. Young v. DFW Corp.*, 184 Ariz. 187 (App. 1995)..... 9, 16

**Statutes**

A.R.S. § 4-311 ..... 15, 16, 17

A.R.S. § 4-312 ..... 15, 16



## INTEREST OF THE AMICUS CURIAE

Homicide Survivors Incorporated (“HSI”) is a nonprofit organization whose mission is to help meet the needs of homicide victims in the state of Arizona. HSI was incorporated in 1997 for the purpose of continuing and expanding the work of the charter chapter of Parents of Murdered Children which was previously founded in Tucson, Arizona in 1982. HSI provides emotional support to homicide survivors during the grieving process, provides a source of funds to assist victims with expenses resulting from homicides, provides criminal justice advocacy, and provides public education about the criminal justice system and the prevention of crime.

The homicide victims to whom HSI provides services are often family members of those killed by drunk drivers. Many of these drunk drivers were over-served at bars and restaurants before getting behind the wheel and leaving a trail of innocent victims in their wake. The outcome of the issues in this case directly impacts these victims’ rights to recover damages for their injuries. HSI submits this brief to help preserve the rights of those victims to whom it provides services and the rights of those who are similarly victimized.

Alcohol-related collisions is an ongoing problem here in Arizona. **Figure 1**, below, is based on data compiled by the Arizona Department of Transportation (“ADOT”).

<b>Year</b>	<b># of Total Collisions</b>	<b># of Alcohol-Related Collisions</b>	<b>% of Total Collisions that are Alcohol-Related</b>	<b># of Alcohol-Related Collisions with Fatalities</b>	<b>Total # of Alcohol-Related Collisions Fatalities</b>
<b>1983</b> <b>(App. 25)</b>	76,616	9,361	12.22%	204	230
<b>1993</b> <b>(App. 32)</b>	97,903	7,698	7.86%	221	258
<b>2018</b> <b>(App. 49)</b>	127,056	4,651	3.66%	242	261
<b>2019</b> <b>(App. 66)</b>	129,750	4,907	3.78%	234	256
<b>2020</b> <b>(App. 83)</b>	98,778	4,506	4.56%	163	181

ADOT estimated a \$350,438,600 in economic losses (approximately \$718,607,695, adjusted for inflation) due to alcohol-related crashes in 1993 (App. 30); \$3,144,914,151 in economic losses due to alcohol-related crashes in 2018 (App. 47); \$3,055,518,939 in economic losses due to alcohol-related crashes in 2019 (App. 64); and \$2,326,504,005 in economic losses due to alcohol-related crashes in 2020 (App. 81).

In 1983, the year *Ontiveros* was decided, 12.22% of all collisions in Arizona were alcohol-related and resulted in 230 fatalities. See Arizona Traffic Accident Summary 1983, Alcohol-Related Accidents (App. 23). Ten years later, in 1993, alcohol-related collisions noticeably decreased in both total numbers (from 9,361 to 7,698 – demonstrating a decrease in 1,663 alcohol-related collisions) and as a percentage of the total number of collisions on Arizona’s roadways (from 12.22%



1 like that of an automobile collision claim, a premises liability claim, or a  
2 professional malpractice claim.

3         Dramshop claims were not unrecognized at statehood, but rather, after  
4 statehood, a common-law rule of “non-liability” evolved. This judge-made rule  
5 was based upon a perceived lack of duty running from the seller of alcohol to the  
6 person injured or a breach of the causal chain connecting the sale of alcohol to the  
7 injury caused as a result of a patron’s intoxication. In *Ontiveros*, this Court  
8 analyzed the common law non-liability rule and found both bases lacking. The  
9 Arizona Supreme Court’s reversal of the common-law rule of non-liability did not  
10 create a new “right of action to recover damages for injuries” that was not  
11 recognized at statehood, but rather, it reassessed how legal duty and causation  
12 affected what the *Ontiveros* court noted was nothing more than a common law  
13 negligence and/or negligence *per se* claim. In other words, the *Ontiveros* court  
14 recognized that a legal duty existed and the jury, rather than a judge, should decide  
15 the issue of proximate cause.

16         The Court of Appeals erred when it determined the prohibition against the  
17 abrogation of a “right of action to recover damages for injuries” in Article 18,  
18 section 6 of the Arizona State Constitution did not apply to negligence claims  
19 against a seller of alcohol. While the Legislature was free to supplement the  
20 common law right of such actions, the Arizona Constitution does not permit the

1 Legislature to abrogate what is and, since statehood, always has been a protected  
2 negligence claim.

3 **REASONS WHY THE ARIZONA SUPREME COURT**  
4 **SHOULD GRANT THE PETITION FOR REVIEW**

5 The Arizona Supreme Court should grant review because this is an issue of  
6 statewide importance. *Quiroz v. ALCOA Inc.*, 243 Ariz. 560, ¶ 6 (2018).

7 Interpretation of the Arizona Constitution is an issue of statewide importance.

8 *Rumery v. Baier*, 231 Ariz. 275 ¶ 13 (2013). Additionally, the Court of Appeals’

9 opinion in this matter conflicts with several other decisions of the Court of

10 Appeals. *Compare Young ex rel. Young v. DFW Corp.*, 184 Ariz. 187, 191 (App.

11 1995) (“We therefore hold that section 4-312(B) unconstitutionally abrogates the

12 general negligence cause of action recognized in *Ontiveros*, contrary to article 18,

13 section 6 of the Arizona Constitution”), and *Andrews, ex rel. Woodard v. Eddie’s*

14 *Place*, 199 Ariz. 240 (App. 2000) (“We find nothing in this language clearly

15 indicating that the legislature intended, by its enactment of § 4-311, to annul or

16 abrogate *Ontiveros’s* holding”), with *Torres v. Jai Dining Servs. (Phx.), Inc.*, 508

17 P.3d 1148, 1159 (App. 2022) (“...the plain language of § 4-312(B), when read in

18 conjunction with § 4-311, makes clear the legislature expressly preempted the

19 common law liability created by *Ontiveros...*).

- 20 **A. A “dramshop claim” is a “right of action to recover damages for**  
21 **injuries” protected by Article 18, Section 6 of the Arizona State**  
**Constitution**

1           “To establish a claim for negligence, a plaintiff must prove four elements:  
2 (1) a duty requiring the defendant to conform to a certain standard of care; (2) a  
3 breach by the defendant of that standard; (3) a causal connection between the  
4 defendant's conduct and the resulting injury; and (4) actual damages.” *Gipson v.*  
5 *Kasey*, 214 Ariz. 141, ¶ 9 (2007) (citing *Ontiveros v. Borak*, 136 Ariz. 500, 504  
6 (1983)). “The cause of action for negligence was established in pre-statehood law.”  
7 *Dickey v. City of Flagstaff*, 197 Ariz. 422, ¶ 32 (App. 1999). Negligence *per se*, or  
8 negligence derived by violation of statute, was also available before Arizona  
9 became a state. *See, e.g., Maricopa and Phoenix Salt River Valley R.R. Co. v.*  
10 *Dean*, 7 Ariz. 104 (1900) (“... the case turned upon the fact whether or not the  
11 statutory requirement... was complied with in this instance.”).

12           One of the first Arizona cases to address an action against a seller of alcohol  
13 was *Pratt v. Daly*, 55 Ariz. 535 (1940). In that case, Anna Daly sought to recover  
14 damages from George Pratt and B. J. Moore, saloon keepers, who sold intoxicating  
15 liquors to Anna Daly’s husband, someone they knew to be “... an habitual  
16 drunkard...”. *Id.* at 535-47. The Arizona Supreme Court considered whether “the  
17 law recognizes an action of this nature.” *Id.* at 535. The Court noted, “... it is plain  
18 from the facts pleaded that the tort, if one existed, sounds in negligence.  
19 Actionable negligence is of two kinds, statutory and common law.” *Id.*

20           The Arizona Supreme Court went on to say that typically “(1) the  
21 consumption and not the sale is the proximate cause of any injury, and (2) ...the

1 consumer is guilty of contributory negligence which is imputed to plaintiff, and no  
2 recovery can be had.” *Id.* at 539. Nonetheless, on the facts presented, the Court  
3 upheld a verdict against the sellers of alcohol since the sellers had reason to know  
4 that Anna Daly’s husband was “... an habitual drunkard...” and determined that  
5 his consumption of alcohol was not voluntary. *Id.* at 546-7.

6 The Court in *Pratt* specifically addressed whether this was a new cause of  
7 action, stating:

8 Every requested application of the principles of the common  
9 law to a new set of circumstances is originally without  
10 precedent... [W]e are not asked to make a law. We are asked to  
11 declare what the common law is and always has been, and a  
12 declaration by us that it has always permitted such an action,  
13 even though none has ever actually been brought, is no more  
14 legislation than would be a declaration that it does not.

12 *Id.* at 546. A few years later, the Arizona Supreme Court considered the case  
13 of *Collier v. Stamatis*, 63 Ariz. 285 (1945). There, the plaintiff was mother to a 15-  
14 year-old who was sold alcohol by a licensed tavern keeper. *Id.* at 287. Once again,  
15 the Court noted that “[t]he action [was] founded upon tort...”. *Id.* Once again, the  
16 Court noted that “[a]ctionable negligence may be of two kinds, either statutory or  
17 common law... .” *Id.* at 288. In *Collier*, the Court upheld the dismissal of the  
18 plaintiff’s complaint, not because such an action did not exist, but rather, because it  
19 was felt that “...when damage arises from voluntary intoxication[,] the seller of the  
20 intoxicant is, at common law, not liable in tort for the reason that his act is not the  
21 efficient cause of the damage.” *Id.*

1           *Collier*'s rule of non-liability for claims against the sellers of alcohol due to  
2 a lack of proximate cause continued in Arizona for a number of years. *See, e.g.,*  
3 *Vallentine v. Azar*, 8 Ariz. App. 247, 249-8 (1968) (finding no proximate cause  
4 between the defendant bar serving the underage plaintiff alcohol and the plaintiff's  
5 subsequent injuries); *Thompson v. Bryson*, 19 Ariz. App. 134, 138 (1973) (“[W]e  
6 hold as a matter of law that... even had the jury found negligence on the part of the  
7 appellees in selling intoxicating beverage to Whitmore for his own ingestion, the  
8 element of proximate cause could not have been established”); *Lewis v. Wolf*, 122  
9 Ariz. 567, 573 (App. 1979) (following *Collier*, but criticizing its reasoning as  
10 “anachronistic and illogical”). *But cf. Pierce v. Lopez*, 16 Ariz. App. 54, 58 (1971)  
11 (holding that a tavern has a duty to protect their invitees); *McFarlin v. Hall*, 127  
12 Ariz. 220, 224-5 (1980) (holding that injury caused by the violence of other  
13 patrons was foreseeable and, thus, proximate cause could be found).

14           *Ontiveros v. Borak*, 136 Ariz. 500 (1983) reanalyzed the issue of proximate  
15 cause arising in negligence cases against sellers of alcohol. The Arizona Supreme  
16 Court rightfully applied a negligence analysis to such actions which require a duty,  
17 breach of that duty, causation, and damages. *Id.* at 504. While the *Ontiveros* Court  
18 recognized that the common law rule had been one of non-liability for tavern  
19 owners, the Court also found that, in light of changing societal standards, the  
20 former common law rule of non-liability no longer applied:



1 All counsel agreed at oral argument that the common law rule  
2 was not a rule of immunity. Indeed, it is impossible to imagine  
3 why, of all occupations, those who furnish liquor should be  
4 singled out for a judicially conferred blessing of immunity to  
respond in damages for their wrongful acts. The common law  
rule was one of nonliability, founded, as indicated in both *Pratt*  
and *Collier*, upon concepts of causation.

5 *Id.* at 505. Utilizing Arizona common law concepts that arose from  
6 negligence actions since statehood, the Arizona Supreme Court looked to whether  
7 there was “cause-in-fact” from the service of alcohol to the injury that was  
8 sustained. *Id.* The Court found, “Arizona law holds that cause-in-fact exists if the  
9 defendant’s act helped cause the final result and if that result would not have  
10 happened without the defendant's act.” *Id.* (citing *McDowell v. Davis*, 104 Ariz. 69,  
11 72 (1968)). Proximate cause, according to the *Ontiveros* court, could also not be  
12 said to be a complete bar to recovery:

13 The common law rule of tavern owner nonliability was mainly  
14 based upon the concept that the chain of legal causation  
15 between the selling of the alcohol and the injury was broken or  
16 “superseded by the voluntary act of the purchaser in imbibing  
17 the drink”... [but]... the original actor is relieved from liability  
for the final result when, and only when, an intervening act of  
another was unforeseeable by a reasonable person in the  
position of the original actor and when, looking backward, after  
the event, the intervening act appears extraordinary...

18 The test, then, for whether the actions of a patron [] constitute a  
19 superseding cause which relieves the tavern owner from  
20 liability is whether [the patron’s] conduct was unforeseeable to  
21 one in [the tavern owner’s] position and whether the court can  
say with the benefit of hindsight that the occurrence of the harm  
through the conduct of the intervening actor was both  
unforeseeable and extraordinary.

1           *Id.* at 506 (internal citations omitted). Again, this was not the Arizona  
2 Supreme Court creating a new cause of action, but rather, the Arizona Supreme  
3 Court analyzed “dramshop claims” through the lens of a common law negligence  
4 or negligence *per se* action:

5                     We conclude, therefore, that those who furnish liquor have an  
6 obligation or ‘duty’ to exercise care for the protection of others.  
7 This is an obligation imposed upon tavern owners for the  
8 benefit of those who may be injured by the tavern owners’  
9 patrons, whether such injury occurs on or off the premises. We  
10 find that duty both as a matter of common law and of statute.  
11 The duty is not limited to preventing violent or unruly conduct  
12 that threatens other patrons [citation omitted]; it includes the  
13 duty to exercise due care in ceasing to furnish intoxicants to  
14 customers in order to protect members of the public who might  
15 be injured as a result of the customer's increased intoxication.

16           *Id.* at 511. Since *Ontiveros*, this Court has repeatedly analyzed “dramshop  
17 claims” through the lens of common law negligence principles. *See, e.g. Gipson*,  
18 214 Ariz. at ¶ 11 (citing to *Ontiveros* for the elements of actionable negligence);  
19 *Guerra v. State*, 237 Ariz. 183, ¶ 7 (2015); *Quiroz*, 243 Ariz. at ¶ 64-5 (2018). In  
20 *Quiroz*, the Arizona Supreme Court noted:

21                     A vendor is under a duty not to sell liquor where the sale  
creates a risk of harm to the customer or to others. This  
conclusion flows from general principles of negligence law...  
(citations and quotation marks omitted)

... *Ontiveros* addressed the issue of duty by using Arizona’s  
well-established duty framework: special relationships and  
public policy.

1           *Quiroz*, 243 Ariz. at ¶65. The point is this: An action against the seller of  
2 alcohol or a “dramshop claim” is and always has been nothing more than a  
3 negligence action. Common law and negligence *per se* claims have been around  
4 since before Arizona became a state. While a common law rule of “non-liability”  
5 arose, finding that, as a matter of law, some actions against sellers of alcohol were  
6 barred based upon a lack of causation, *Ontiveros* changed that perspective and  
7 allowed the issue of causation to go to a jury – but it did not create a new right of  
8 action were none had previously existed. The nature of the claim did not change;  
9 only the causation analysis was altered.

10           **B.     The Legislature cannot abolish common law “dramshop claims”**

11           Article 18, section 6 of the Arizona Constitution states: “The right of action  
12 to recover damages for injuries shall never be abrogated...”. Ariz. Const. art, 18, §  
13 6. Yet, Arizona Revised Statutes, Title 4, section 312 seeks to do exactly that.  
14 A.R.S. § 4-312.

15           A.R.S. § 4-311 provides a statutory cause of action against a liquor licensee  
16 for a person who is injured – or their survivors if the person is killed – if the liquor  
17 licensee sold alcohol to a patron who was who was under the legal drinking age or  
18 to a patron who was obviously intoxicated – as defined by statute. A.R.S. § 4-311.  
19 A.R.S. § 4-312(a) immunizes the liquor licensee from claims under A.R.S. § 4-311  
20 if the claimant is the intoxicated patron or was with the intoxicated patron while  
21

1 the intoxicated patron consumed the alcohol – or the survivor of either. A.R.S. § 4-  
2 312. A.R.S. § 4-312(b) goes even further:

3           Subject to the provisions of subsection A of this section and  
4           except as provided in section 4-311, a person, firm, corporation  
5           or licensee is not liable in damages to any person who is  
6           injured, or to the survivors of any person killed, or for damage  
7           to property which is alleged to have been caused in whole or in  
8           part by reason of the sale, furnishing or serving of spiritous  
9           liquor.

7           A.R.S. § 4-312(b). The effect of A.R.S. § 4-312 is to abrogate the common  
8 law negligence right of action to recover damages for injuries. As indicated by the  
9 Court of Appeals in their conclusion in *Young*, 184 Ariz. at 190:

10           [S]ection 4-312(B) fails to afford plaintiffs such as *Young* a  
11           reasonable alternative to the general negligence action  
12           recognized in *Ontiveros* when they are injured by a driver that  
13           the licensee knows or should know is intoxicated, but the driver  
14           is not ‘obviously intoxicated’ as defined by section 4-311(C).  
15           By limiting licensee liability to section 4-311, section 4-312(B)  
16           does not merely ‘regulat[e] the mode, method, and procedure to  
17           be followed in pursuing the cause of action ... [but] completely  
18           deprive[s] many who have sustained real injury of judicial  
19           remedy,’ [citation omitted] and imposes the type of  
20           ‘insurmountable defense’ constructed by legislative act that our  
21           supreme court condemned....

          We therefore hold that section 4-312(B) unconstitutionally  
abrogates the general negligence cause of action recognized in  
*Ontiveros*, contrary to article 18, section 6 of the Arizona  
Constitution.

          The foundation of the Court of Appeals’ opinion in this matter is: “A.R.S. §  
4- 312(B) does not run afoul of the Arizona Constitution’s anti-abrogation clause  
because dram shop liability claims did not exist at common law in 1912.” *Jai*

1 *Dining Servs. (Phx.), Inc.*, 508 P.3d at 1159. However, this is an incorrect analysis  
2 of the legal underpinnings of a “dramshop claim”. As this Court and the Courts of  
3 Appeals have repeatedly recognized, actions against the sellers of alcoholic  
4 beverages for the injuries caused as a result of that sale are common law  
5 negligence and/or negligence *per se* actions. As previously established, such  
6 claims existed at common law – it was simply felt that the element of causation  
7 was lacking. *Ontiveros* and its progeny changed that perception and now give the  
8 question of causation to the fact finder to determine. Negligence is not a new cause  
9 of action – *Ontiveros* simply changed the causation analysis in negligence actions  
10 against the sellers of alcoholic beverages.

## 11 **CONCLUSION**

12 The Court of Appeals’ decision is inconsistent with its own precedent in  
13 *Young and Eddie’s Place*. It was also wrongly decided. “Dramshop claims” are not  
14 new actions; they are and always have been analyzed by the Courts as nothing  
15 more and nothing less than negligence actions. A.R.S. § 4-311 abrogates a right of  
16 action to recover damages for injuries that was recognized upon Arizona’s  
17 statehood – even if that right of action was at one time felt, in some circumstances,  
18 to be legally deficient for want of causation. As such, the Arizona Supreme Court  
19 should grant the Petition for Review and reverse the Court of Appeals’ decision.

1 RESPECTFULLY SUBMITTED this 26<sup>th</sup> day of July, 2022.

2 **MICK LEVIN, P.L.C.**

3 /s/ Mick Levin

4 **MICK LEVIN, ESQ. (SBN 021891)**

5 3401 N 32<sup>nd</sup> Street

6 Phoenix, AZ 85018

7 **VAN AMBURG LAW FIRM, P.L.L.C.**

8 /s/ Mick Levin (with permission, for)

9 **NOAH J. VAN AMBURG, ESQ. (SBN 022737)**

10 2315 E. Speedway Blvd.

11 Tucson, AZ 85719

12 *Co-Counsel for Amicus Curiae Homicide*  
13 *Survivors, Inc.*

**APPENDIX**

1  
2  
3  
4  
5  
6  
7  
8  
9  
10  
11  
12  
13  
14  
15  
16  
17  
18  
19  
20  
21

Arizona Traffic Accident Summary 1983, Alcohol-Related Accidents.....20

Arizona Motor Vehicle Crash Facts for 1993 § 6, Alcohol-Related Crashes .....29

Arizona Motor Vehicle Crash Facts for 2018 § 6, Alcohol-Related Crashes .....41

Arizona Motor Vehicle Crash Facts for 2019 § 6, Alcohol-Related Crashes .....58

Arizona Motor Vehicle Crash Facts for 2020 § 6, Alcohol-Related Crashes .....75

# Arizona Traffic Accident Summary

1983



Arizona Department of Transportation



**GOVERNOR**

Bruce Babbitt

**State Transportation Director**

William A. Ordway

**Assistant Director of ADOT, Highways Division**

Charles L. Miller

**State Transportation Board**

**Chairman**

Hal Butler, Show Low

**Vice Chairman**

Sondra Eisberg, Prescott

**Members**

Lynn M. Sheppard, Globe

Ted Valdez, Peoria

Arthur Atonna, Douglas

Douglas Kennedy, Tucson

Don Cooper, Mesa

00576AA

# Table of Contents

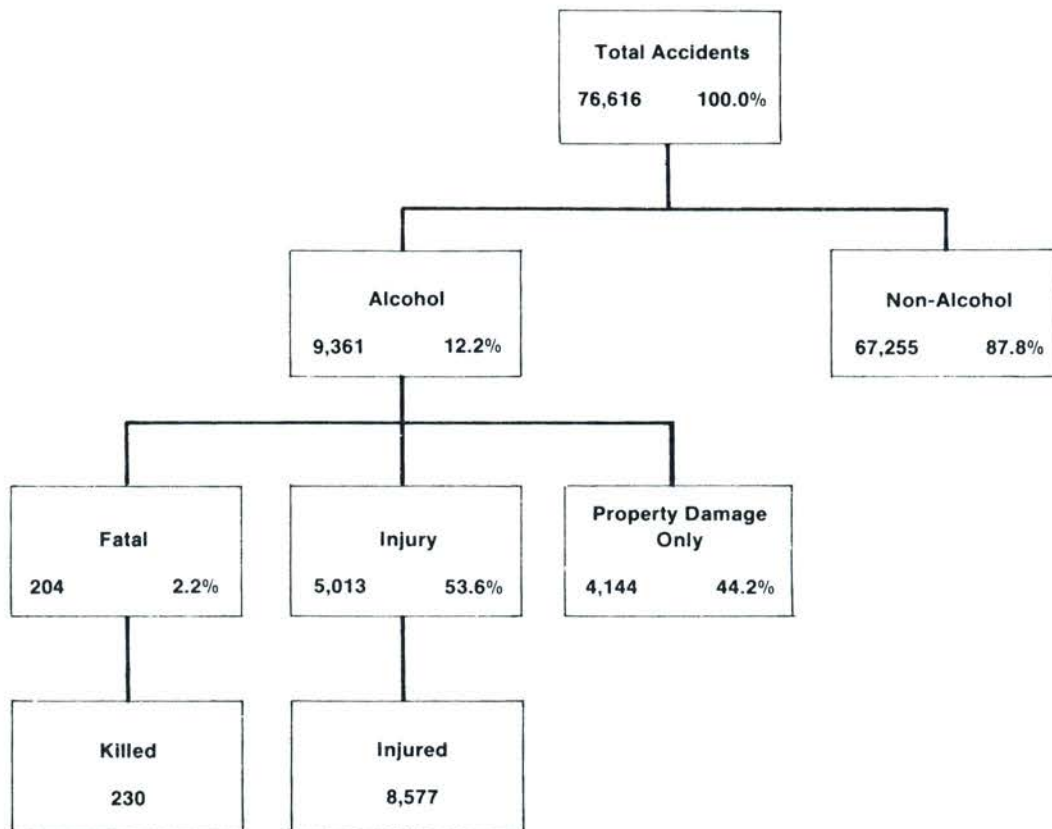
	Page
HIGHLIGHTS AND HISTORICAL TRENDS .....	3
Total accidents, fatalities, injuries, age, sex of victims, economic loss, holiday deaths.	
GEOGRAPHIC LOCATION .....	13
Accidents by state highways, counties, cities.	
ACCIDENT DESCRIPTION .....	21
First harmful event, time, day, month, weather, road conditions.	
MOTOR VEHICLE AND DRIVER CHARACTERISTICS .....	29
Vehicle type, registration, age, sex of drivers, accident cause.	
ALCOHOL-RELATED ACCIDENTS .....	35
Age, sex of drivers, history, type of accident, location.	
PEDESTRIAN AND PEDALCYCLIST ACCIDENTS .....	41
Age, sex of victims, actions, history.	
MOTORCYCLE ACCIDENTS .....	47
Age, sex of victims, time day, month, location, history.	
SCHOOL BUS ACCIDENTS .....	53
Injuries, fatalities, history.	

*The 1983 ARIZONA TRAFFIC ACCIDENT SUMMARY is based on all traffic accident reports submitted to the Arizona Department of Transportation.*

*The SUMMARY is prepared annually by the Traffic Engineering Section of ADOT, with cooperation and assistance from Public Information Office, Forms Management, and Governor's Office of Highway Safety.*

*Specific questions regarding data presented in the report should be addressed to Safety Projects Services at 255-7724.*

# Alcohol-Related Accidents





## Alcohol Related Accidents and Fatalities 1977 - 1983

YEAR	Total Alcohol Related Accidents	Percent of All Accidents	Persons Killed	Percent of All Killed
1977	10,667	14.1%	290	31.1%
1978	12,103	13.8%	390	38.0%
1979	12,877	14.6%	376	36.5%
1980	12,570	15.7%	347	36.6%
1981	12,029	16.6%	328	35.8%
1982	9,839	14.4%	246	34.0%
1983	9,361	12.2%	230	34.1%

### 1983 Alcohol Related Accidents

TYPE OF MOTOR VEHICLE ACCIDENT	Total	Fatal	Non-Fatal Injury	Property Damage
Overturning	506	38	353	115
Other Non-Collision	475	13	333	129
Pedestrian	106	17	89	0
Motor Vehicle in Transport	4,758	85	2,584	2,089
Motor Vehicle on Other Roadway	22	0	12	10
Parked Motor Vehicle	772	3	264	505
Railway Train	3	1	0	2
Pedalcyclist	30	1	29	0
Animal	15	0	3	12
Fixed Object	2,636	46	1,328	1,262
Other Object	38	0	18	20
Not Stated	0	0	0	0
<b>Totals</b>	<b>9,361</b>	<b>204</b>	<b>5,013</b>	<b>4,144</b>

ROAD SURFACE CONDITION	Number of Accidents	Number of Fatal Accidents	Number of Non-Fatal Injury Accidents
Dry	7,992	164	4,325
Wet	896	12	461
Snowy or Icy	42	2	18
Other	431	26	209
Not Stated	0	0	0
<b>Totals</b>	<b>9,361</b>	<b>204</b>	<b>5,013</b>

## Drinking Drivers Involved in Accidents

- *In the 9,361 accidents involving alcohol, 9,636 drivers had been drinking*

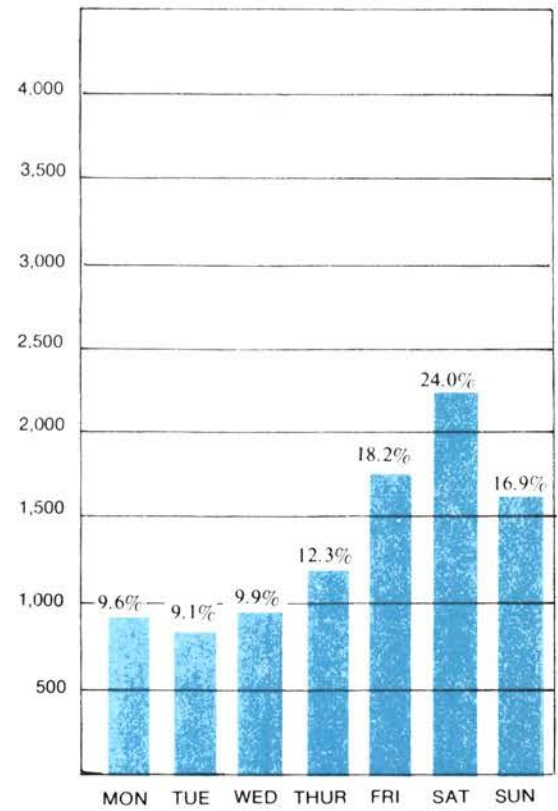
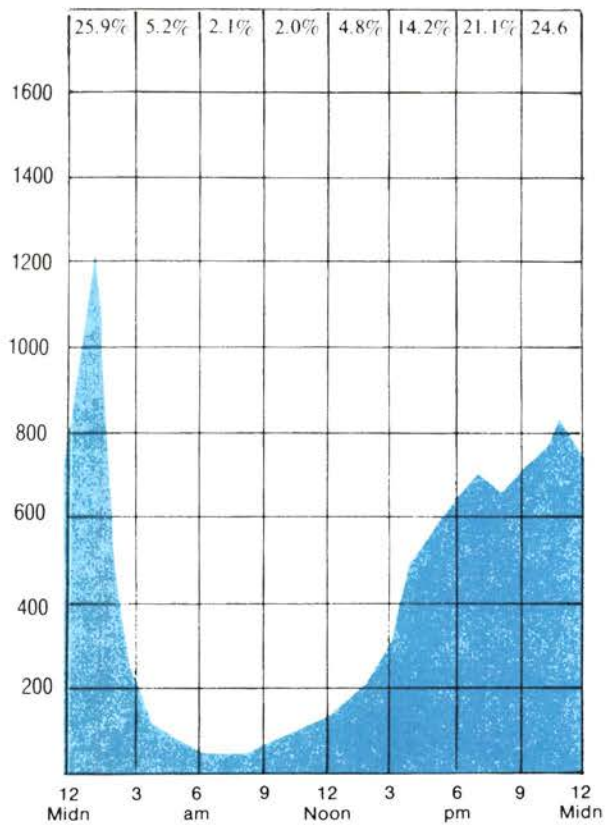
AGE OF DRIVER	Number of Drivers	Percent of Total	Number of Drivers in Fatal Accidents	Number of Drivers in Nonfatal Injury Accidents
15 & Younger	23	.2	0	13
16	98	1.0	5	55
17	180	1.9	4	99
18-19	859	8.9	26	488
20-24	2,479	25.7	60	1,353
25-34	3,085	32.0	80	1,687
35-44	1,388	14.4	26	744
45-54	629	6.5	13	312
55-64	437	4.5	5	225
65-74	188	2.0	4	91
75 & Older	39	.4	1	21
Not Stated	231	2.5	2	79
<b>Totals</b>	<b>9,636</b>	<b>100.00%</b>	<b>226</b>	<b>5,167</b>

- *82% of the drinking drivers were male.*

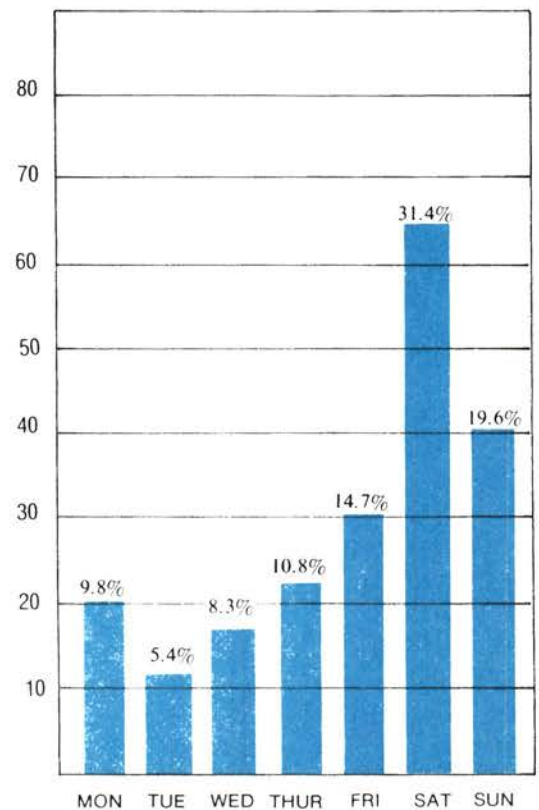
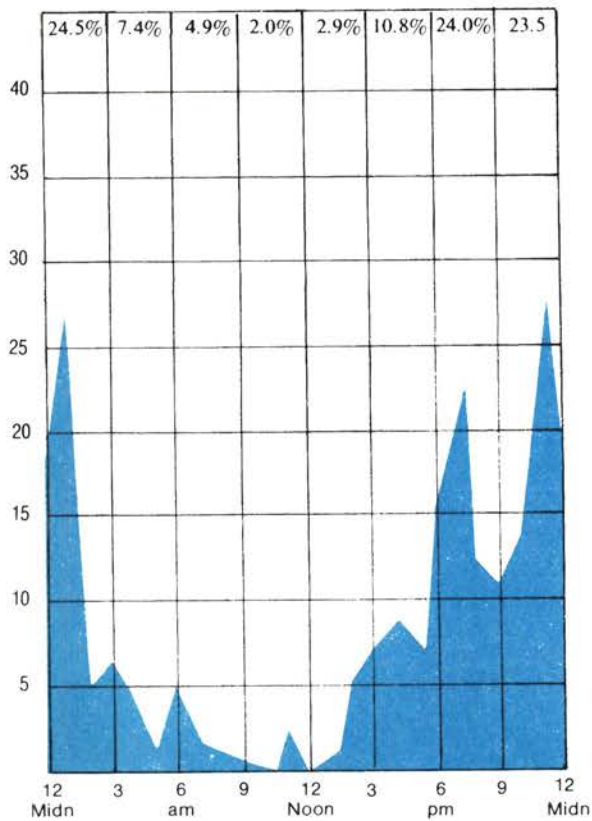
SEX OF DRIVER	Number of Drivers	Number of Drivers in Fatal Accidents	Number of Drivers in Nonfatal Injury Accidents
Male	7,909	194	4,237
Female	1,632	31	906
Not Stated	95	1	24
<b>Totals</b>	<b>9,636</b>	<b>226</b>	<b>5,167</b>



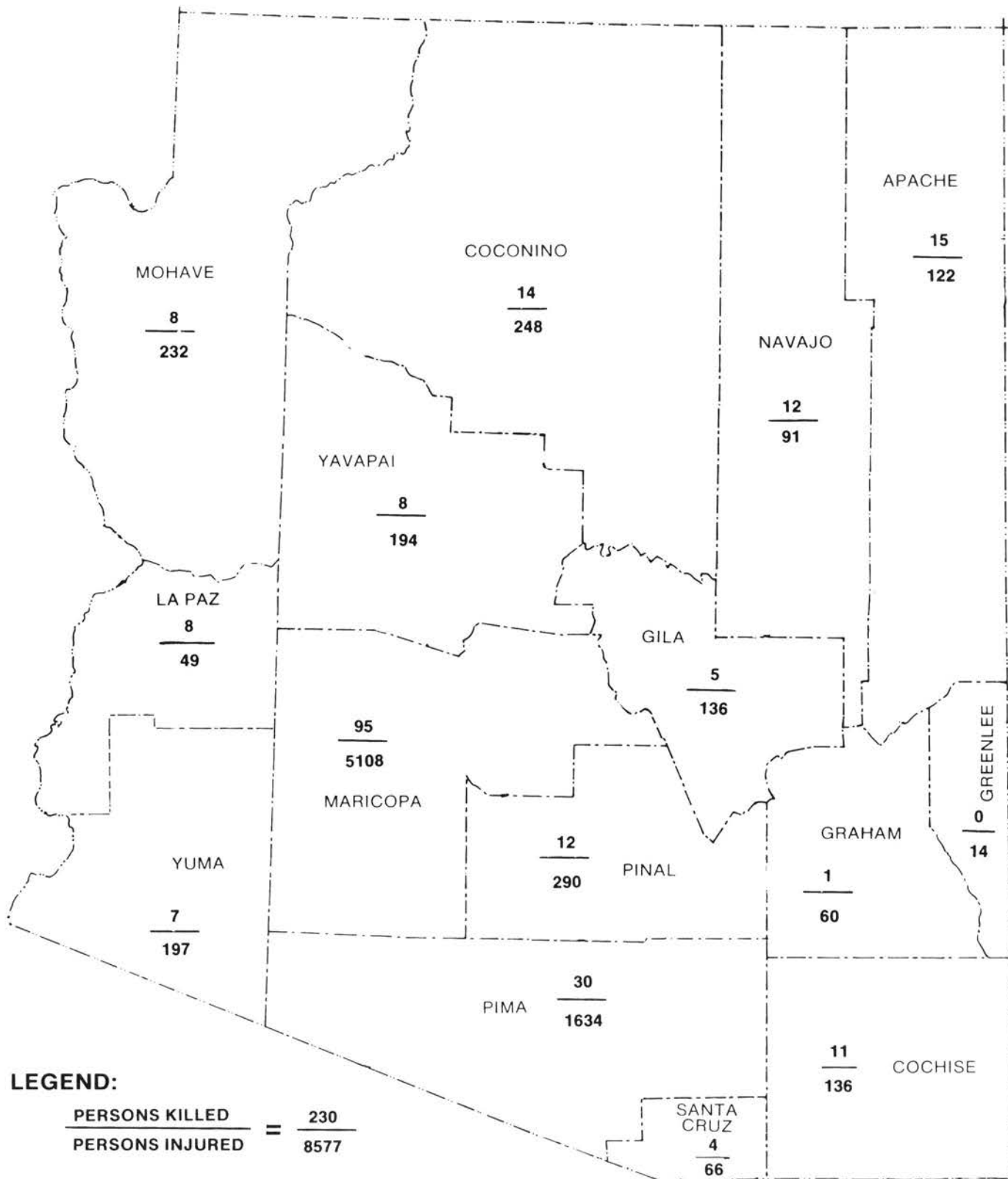
## Total Accidents Involving Drinking Drivers



## Fatal Accidents Involving Drinking Drivers



## Fatalities and Injuries in Accidents Involving Drinking Drivers



**LEGEND:**

$$\frac{\text{PERSONS KILLED}}{\text{PERSONS INJURED}} = \frac{230}{8577}$$

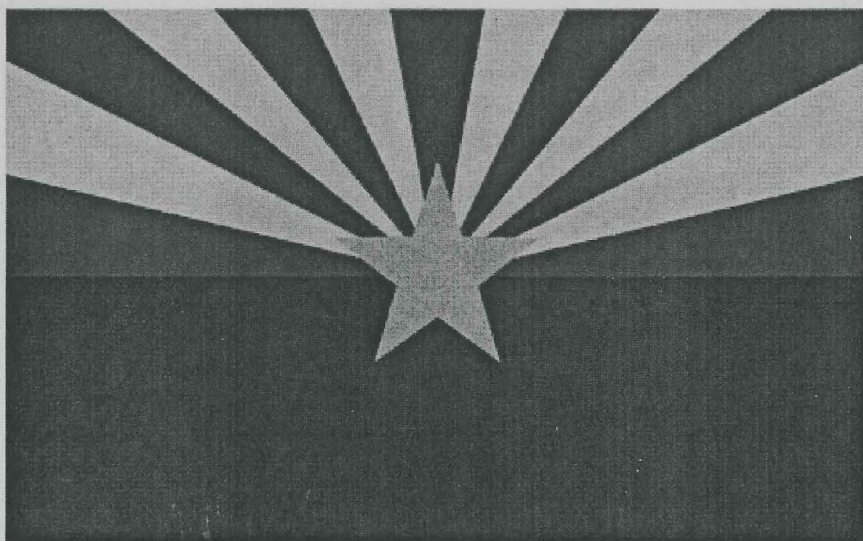


# ARIZONA

## Motor Vehicle Crash Facts

### for

# 1993



Arizona Transportation Research Center  
Library  
206 South 17th Avenue, #075R  
Phoenix, AZ 85007



**The  
Arizona Department of Transportation**

**Fife Symington**  
Governor

**Larry S. Bonine**  
Director

**State Transportation Board**

**Linda Brock-Nelson**  
Chairman

**Sharon B. Megdal**  
Vice Chairman

Members

**Donovan M. Kramer, Sr.**

**Jack F. Husted**

**Burton Kruglick**

**John Hudson**

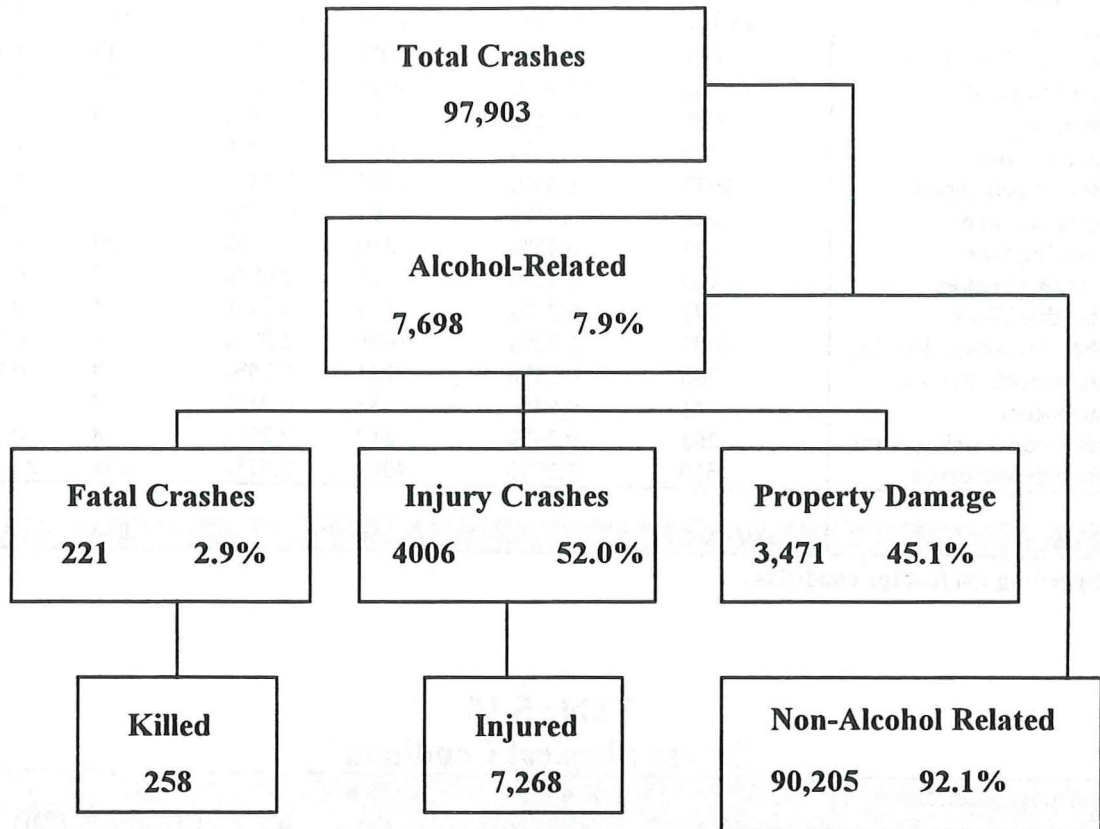
**Jerry C. Williams**



# TABLE OF CONTENTS

<b>Section 1: Highlights and Historical Trends.....</b>	<b>1</b>
Total crashes, historical data, economic loss, victim demographics, vehicle miles traveled, fatality rates, land use, holiday deaths.	
<b>Section 2: Geographic Location.....</b>	<b>12</b>
Urban and rural crashes, crashes by counties, cities, and on state highways.	
<b>Section 3: Accident Descriptions.....</b>	<b>22</b>
Single vehicle and multi-vehicle, lighting, road surface, weather, road grade, time, day, and month.	
<b>Section 4: Safety Devices.....</b>	<b><i>Not available this issue</i></b>
Use of safety devices by drivers and passengers, child restraint, seat positions. (For helmet use, see Section 8: Motorcycle Crashes)	
<b>Section 5: Motor Vehicle and Driver Characteristics.....</b>	<b>35</b>
Crashes by vehicle type, hit and run crashes, motor vehicle registration, licensed drivers by age, killed and injured by vehicle type, gender of drivers, residence and age of drivers, driver errors and physical condition.	
<b>Section 6: Alcohol-Related Crashes.....</b>	<b>40</b>
Alcohol-related crashes by severity and manner of collision, first harmful event, vehicle type, light conditions, single and multi-vehicle crashes, age, gender, safety devices, daytime, weekday, and weekend crashes, pedestrian involvement, month, time, and day of week.	
<b>Section 7: Pedestrian and Pedalcyclists.....</b>	<b>49</b>
Severity of injury, age, gender, history, victims' actions, physical condition, intersection related, lighting, and weather conditions.	
<b>Section 8: Motorcycle Crashes.....</b>	<b>55</b>
Severity of injury, fatalities, and motorcycle registrations, fatality rate, accident type, lighting conditions, road surface, urban and rural, valid licenses, operators' age, license status, operator and passenger helmet usage, victims ages, gender, operator errors, time, weekday, weekend, and month.	
<b>Section 9: School Bus Crashes.....</b>	<b><i>Not available this issue</i></b>
History, driver errors, injuries, fatalities, time of day, crash location, weather conditions and vehicles involved.	
<b>Acknowledgements.....</b>	<b>67</b>

## Section 6: Alcohol-Related Crashes



The statistics in the Alcohol-Related section represent those crashes where the investigating officer indicated that a driver had been drinking an alcoholic beverage and may or may not be substantiated by a blood or breath test. No assumption is to be made that the person was legally intoxicated (blood alcohol content of 0.1% or higher) at the time the accident took place.

### Economic Loss due to Alcohol-Related Crashes in Arizona for 1993

<b>Fatalities</b>	<b>\$198,900,000</b>
<b>Injuries</b>	<b>\$131,396,800</b>
<b>Property Damage</b>	<b>\$ 20,131,800</b>
<b>Total</b>	<b>\$350,428,600</b>



1993 Arizona Crash Facts Summary

**Table 6-1**  
**1987 to 1993 - Alcohol-Related Crashes**

Year	Alcohol-Related Crashes	Percent of all Crashes	Victims Killed	Percent of all Fatalities
1988	9,013	9.37%	334	35.38%
1989	8,565	9.30%	291	33.11%
1990	8,821	9.68%	284	32.68%
1991	8,197	9.56%	296	36.27%
1992	7,513	8.36%	262	32.39%
1993	7,698	7.86%	258	32.21%

**Table 6-2**  
**Manner of Collision in Alcohol-Related Crashes**

Manner Of Collision	Number of Crashes					
	Total	Percent of all Crashes	Fatal	Percent of Fatal Crashes	Injury	Percent of Injury Crashes
DUE TO A COMPUTER PROGRAMMING PROBLEM, SOME ALCOHOL-RELATED CRASH INFORMATION WAS NOT AVAILABLE FOR THIS ISSUE OF ARIZONA CRASH FACTS. WE PLAN TO HAVE IT IN THE NEXT ISSUE.						

**Table 6-3**  
**Alcohol-Related Crashes by First Harmful Event**

First Harmful Event	Total	Number of Crashes			Number of Persons	
		Fatal	Injury	PDO	Killed	Injured
Overturning	471	41	320	110	45	581
Other Non - Collision	100	4	67	29	4	78
Pedestrian	66	18	48	0	20	58
Motor Veh. In Transit	4,157	82	2,321	1,754	96	4,829
Motor Veh. Other Roadway	2	0	1	1	0	3
Parked Motor Veh.	461	0	134	327	0	173
Railway Train	4	1	2	1	1	3
Pedalcyclist	35	2	33	0	3	34
Animal	23	1	13	9	1	17
Fixed Object	2,354	71	1,055	1,228	87	1,475
Other Object	25	1	12	12	1	17
<b>TOTALS</b>	<b>7,698</b>	<b>221</b>	<b>4,006</b>	<b>3,471</b>	<b>258</b>	<b>7,268</b>



Section 6: Alcohol-Related Accidents

**Table 6-4**  
**Alcohol-Related Crashes by Vehicle Type**

Motor Vehicle Type	Total Number of Vehicles	Percent	Number of Vehicles		
			Fatal	Injury	PDO
Passenger Car	4,919	62.85%	117	2,513	2,289
Passenger Car and Trailer	6	0.08%	0	2	4
Pickup Truck (Incl. Panel & Mini Bus)	2,414	30.85%	82	1,248	1,084
Truck or Truck Tractor (Excl. P/U)	4	0.05%	1	1	2
Truck Tractor and Semi-Trailer	10	0.13%	0	4	6
Other Truck Combination	67	0.86%	1	32	34
Farm Tractor and/or Farm Equipment	0	0.00%	0	0	0
Taxicab	4	0.05%	0	3	1
Bus	1	0.01%	0	1	0
School Bus	0	0.00%	0	0	0
Motorcycle	223	2.85%	20	193	10
Motor Scooter or Motor Bicycle	1	0.01%	0	1	0
Other Special Vehicles	152	1.94%	9	80	63
Vehicle Type Not Reported	25	0.32%	1	7	17
<b>TOTALS</b>	<b>7,826</b>	<b>100.00%</b>	<b>231</b>	<b>4,085</b>	<b>3,510</b>

**Table 6-5**  
**Light Conditions - Alcohol-Related Crashes**

Light Condition	Total	Number of Crashes		
		Fatal	Injury	PDO
Daylight	2,210	52	1,171	987
Dawn or Dusk	331	12	170	149
Darkness	5,154	157	2,664	2,333
Not Reported	3	0	1	2
<b>TOTALS</b>	<b>7,698</b>	<b>221</b>	<b>4,006</b>	<b>3,471</b>

**Table 6-6**  
**Road Surface Conditions - Alcohol-Related Crashes**

	Total	Number of Crashes		
		Fatal	Injury	PDO
Dry	6,816	200	3,554	3,062
Wet	603	8	308	287
Snowy or Icy	26	1	12	13
Other	253	12	132	109
<b>TOTALS</b>	<b>7,698</b>	<b>221</b>	<b>4,006</b>	<b>3,471</b>

**Table 6-7**  
**Age of Driver - Alcohol-Related Crashes**

Driver Age	Total Drivers	Percent of all Drivers	Drivers In Fatal Crashes	Percent of all Fatal Drivers	Drivers In Injury Crashes	Percent of all Injury Drivers
15	23	0.29%	0	0.00%	12	0.29%
16	54	0.69%	4	1.73%	25	0.61%
17	92	1.18%	4	1.73%	46	1.13%
18	163	2.08%	9	3.90%	79	1.93%
19	206	2.63%	9	3.90%	117	2.86%
20	259	3.31%	10	4.33%	140	3.43%
21	326	4.17%	8	3.46%	180	4.41%
22	318	4.06%	13	5.63%	173	4.24%
23	341	4.36%	7	3.03%	183	4.48%
24	315	4.03%	9	3.90%	172	4.21%
25-34	2,693	34.41%	82	34.49%	1,432	35.06%
35-44	1,883	24.06%	50	21.65%	945	23.13%
45-54	671	8.57%	14	6.06%	344	8.42%
55-64	286	3.65%	7	3.03%	143	3.50%
65-74	153	1.96%	5	2.16%	71	1.74%
75 & Older	43	0.55%	0	0.00%	23	0.56%
<b>TOTALS</b>	<b>7,826</b>	<b>100.00%</b>	<b>231</b>	<b>100.00%</b>	<b>4,085</b>	<b>100.00%</b>

*The National Highway Traffic Safety Administration estimates that 45% of all fatal U.S. crashes involved alcohol. According to State records, alcohol was involved in 32.21% of the fatal crashes in Arizona during 1993.*

**Table 6-8**  
**Driver Gender - Alcohol-Related Crashes**

Driver Gender	Total Drivers	Percent of All Drivers	Drivers In Fatal Crashes	Percent of Fatal Drivers	Drivers in Injury Crashes	Percent of Injury Drivers
Male	6,444	82.34%	184	79.65%	3,377	82.67%
Female	1,282	16.38%	45	19.48%	680	16.65%
Not Reported	100	1.28%	2	0.87%	28	0.69%
<b>TOTALS</b>	<b>7,826</b>	<b>100.00%</b>	<b>231</b>	<b>100.00%</b>	<b>4,085</b>	<b>100.00%</b>



Section 6: Alcohol-Related Accidents

**Table 6-9  
Safety Restraints - Drinking Drivers**

Drivers	Number of Drinking Drivers				
	No Injury	Possible Injury	Non-Incapacitating Injury	Incapacitating Injury	Fatal
<b>SAFETY RESTRAINT DATA IS NOT AVAILABLE FOR ALCOHOL RELATED CRASHES</b>					

**Table 6-10  
Helmet Use - Drinking Motorcycle Operators**

Operators	Number of Drinking Motorcycle Operators				
	No Injury	Possible Injury	Non-Incapacitating Injury	Incapacitating Injury	Fatal
<b>HELMET USE DATA IS NOT AVAILABLE FOR ALCOHOL RELATED MOTORCYCLE CRASHES</b>					

**Table 6-11  
Persons Killed and Injured in Alcohol-Related Crashes**

Victims Age	Total Killed			Total Injured			Sex Unk.
	Total	Male	Female	Total	Male	Female	
0 - 4	1	1	0	178	89	89	0
5 - 9	1	0	1	165	85	80	0
10 - 14	2	2	0	208	109	99	0
15 - 19	36	25	11	911	572	339	0
20 - 24	42	35	7	1,460	1,019	439	2
25 - 34	74	57	17	2,021	1,385	635	1
35 - 44	51	36	15	1,231	806	423	2
45 - 54	22	16	6	567	349	216	2
55 - 64	16	12	4	232	144	88	0
65 - 74	6	4	2	139	80	59	0
75 & Older	6	4	2	65	37	28	0
Not Reported	1	1	0	91	58	28	5
<b>TOTALS</b>	<b>258</b>	<b>193</b>	<b>65</b>	<b>7,268</b>	<b>4,733</b>	<b>2,523</b>	<b>12</b>



**Table 6-12**  
**When Alcohol-Related Crashes Occurred in 1993**

	Total	Weekday**	Weekend
Daytime***	1,978	1,226	752
Nighttime	5,716	2,415	3301
<b>Total</b>	<b>7,694</b>	<b>3,641</b>	<b>4,053</b>

\*Does not include four alcohol-related crashes where the time of day could not be determined.

\*\*Weekend begins at 6:00 p.m. on Friday and continues through 6:00 a.m. Monday. All other times and days are considered Weekdays.

\*\*\*Daytime refers to the hours between 6:00 a.m. and 6:00 p.m.

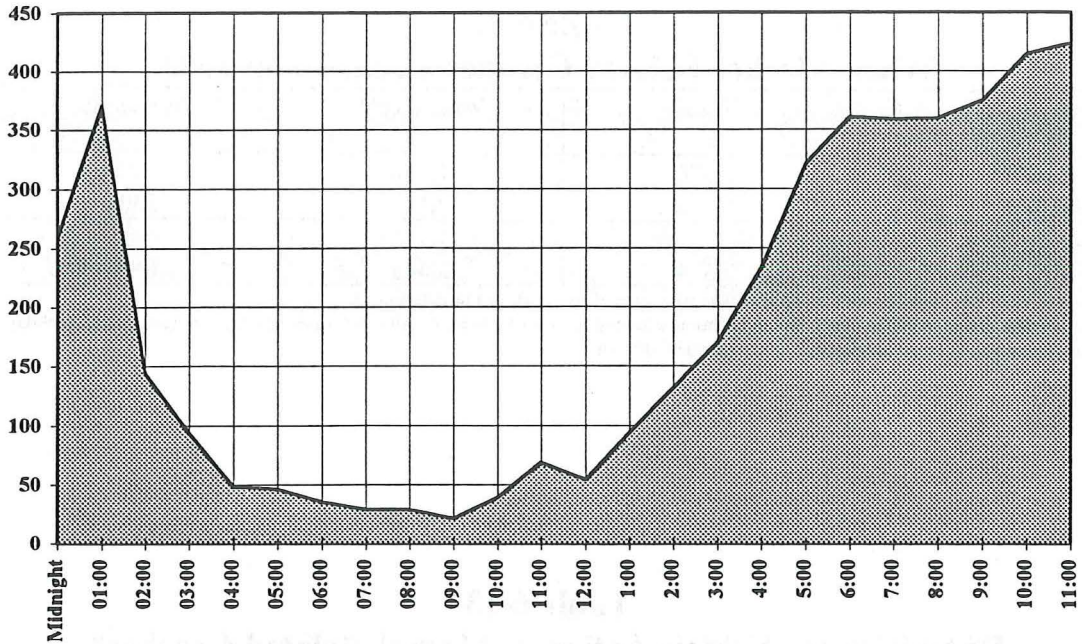
**Table 6-13**  
**Pedestrian vs. Vehicle Action in Alcohol-Related Crashes\***

Pedestrian Action	Totals	Vehicle Action				
		Straight	Right Turn	Left Turn	U-Turn	Others
Crossing at Intersection or Crosswalk	5	4	0	0	0	1
Crossing not at Intersection or Crosswalk	26	25	0	0	0	1
Walking in Roadway with Traffic	5	5	0	0	0	0
Walking in Roadway against Traffic	3	3	0	0	0	0
Standing In Roadway	13	8	0	0	0	5
Pushing or Working on Vehicle in Roadway	2	0	0	0	0	2
Other Working in Roadway	0	0	0	0	0	0
Playing in Roadway	0	0	0	0	0	0
Other in Roadway	15	11	0	0	0	4
Not in Roadway	11	4	2	0	0	5
Not Reported	0	0	0	0	0	0
<b>TOTALS</b>	<b>80</b>	<b>60</b>	<b>2</b>	<b>0</b>	<b>0</b>	<b>18</b>

\*in this table, alcohol-related refers to vehicle driver only

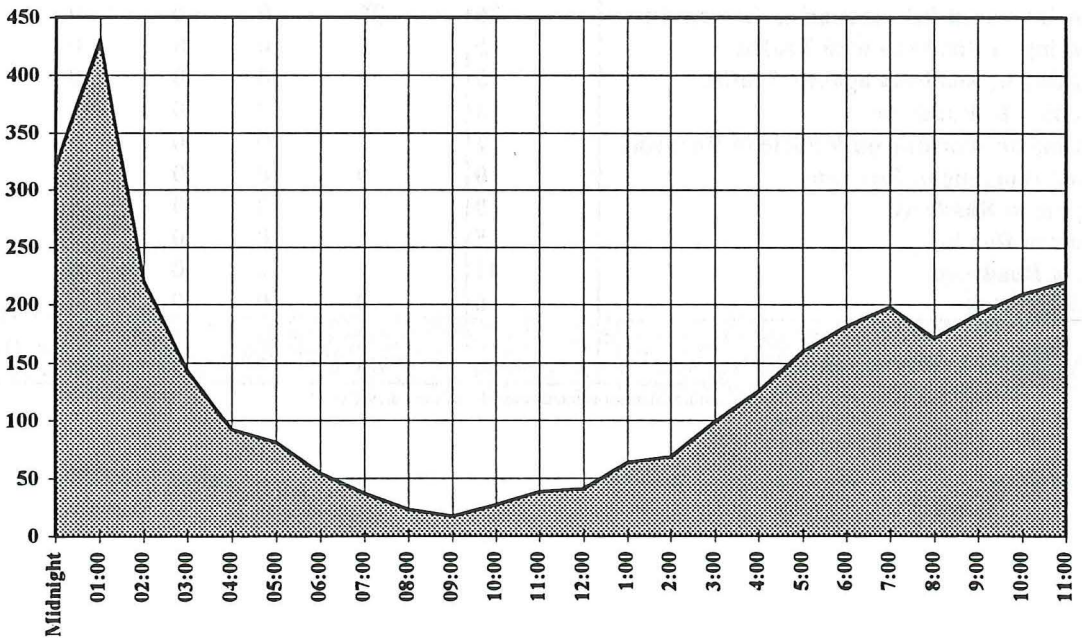
## Section 6: Alcohol-Related Crashes

**Figures 6-2 and 6-3**  
**Alcohol-Related Crashes**  
**Weekdays**



*In 1993, 58.2% of all alcohol-related accidents in the United States were on weekends. Arizona experienced 52.7% of all alcohol-related accidents on weekends.*

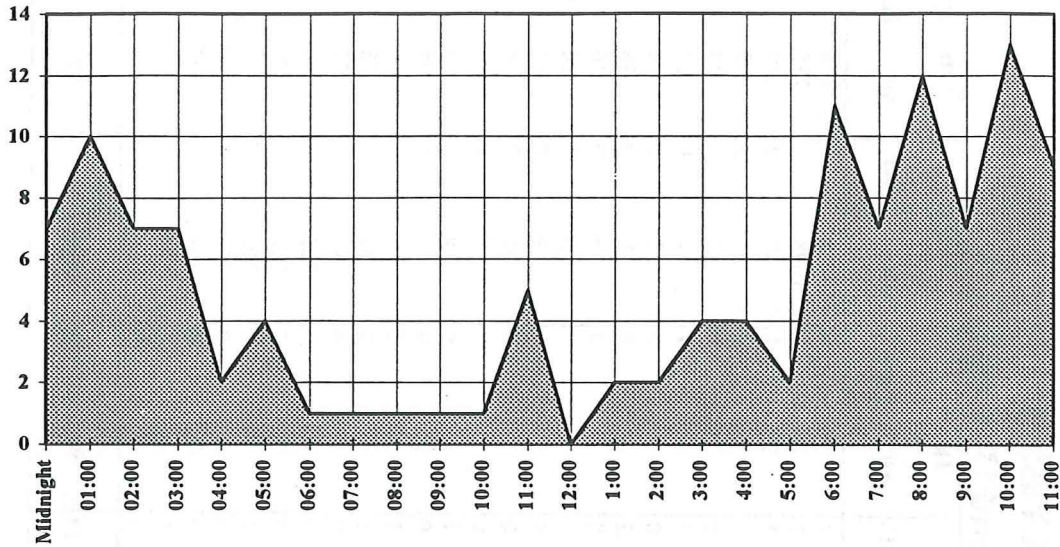
### Weekends





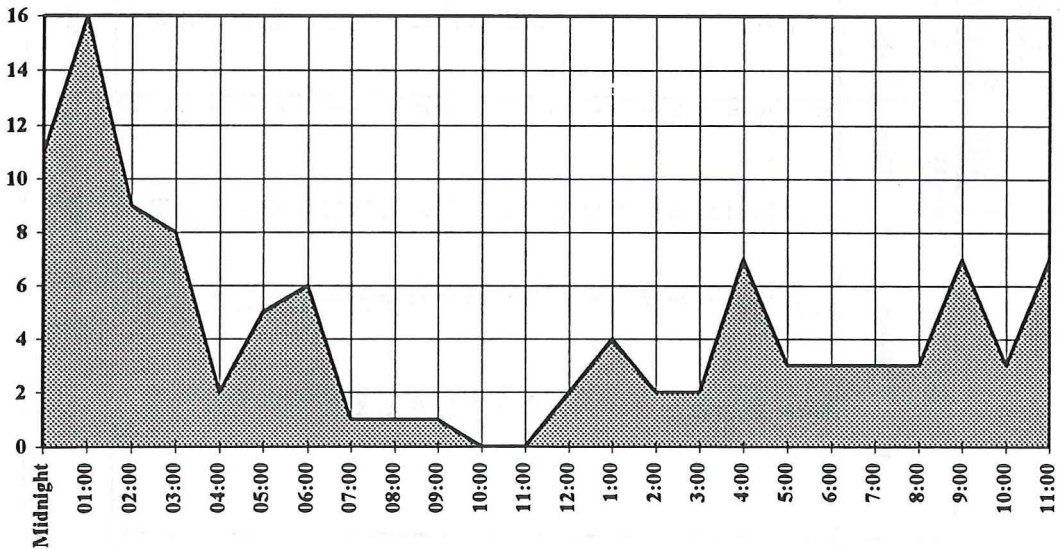
**Figures 6-4 and 6-5  
Fatal Alcohol-Related Crashes**

**Weekdays**



*In 1993, there were 17,461 alcohol related crash fatalities in the United States. 258 occurred in Arizona.*

**Weekends**



**Table 6-14**  
**Alcohol-Related Crashes**  
**Injury Severity by Hour and Day of Week**

Hour Beginning	Total Crashes		Monday		Tuesday		Wednesday		Thursday		Friday		Saturday		Sunday	
	All	Fatal	All	Fatal	All	Fatal	All	Fatal	All	Fatal	All	Fatal	All	Fatal	All	Fatal
Midnight	580	18	46	0	34	2	45	2	49	1	85	2	178	8	143	3
1:00	802	26	73	2	47	1	68	1	74	4	1098	2	235	8	196	8
2:00	365	16	29	2	26	1	24	1	28	1	37	2	120	5	101	4
3:00	237	15	23	3	19	2	18	0	13	0	21	2	65	3	78	5
4:00	140	4	10	0	9	1	8	1	5	0	16	0	49	1	43	1
5:00	127	9	10	0	7	1	7	2	8	1	14	0	34	1	47	4
6:00	89	4	5	1	6	0	3	0	9	0	12	0	34	2	20	1
7:00	66	2	8	0	3	0	7	2	2	0	9	0	16	1	21	0
8:00	52	2	12	1	7	0	2	0	2	0	6	0	16	1	7	0
9:00	38	2	6	0	6	0	0	0	3	0	6	1	14	0	3	1
10:00	66	1	8	1	10	0	4	0	8	0	9	0	18	0	9	0
11:00	107	5	15	1	17	1	8	0	8	0	21	2	28	0	10	0
Noon	95	2	13	0	11	0	8	0	15	0	7	0	24	1	17	1
1:00	157	6	23	0	20	0	12	1	20	0	19	1	46	4	17	0
2:00	200	2	21	0	19	0	26	0	25	0	41	0	45	1	23	1
3:00	269	6	23	0	34	1	27	1	37	1	49	1	64	1	35	1
4:00	358	11	42	0	45	1	42	1	41	0	63	2	73	4	52	3
5:00	481	5	51	1	61	1	62	0	63	0	84	0	82	1	78	2
6:00	542	14	43	2	58	2	70	0	61	5	129	2	101	1	80	2
7:00	557	10	53	1	63	1	60	2	71	2	112	1	110	2	88	1
8:00	531	15	61	2	56	1	62	4	76	2	105	3	83	1	88	2
9:00	567	14	57	1	55	2	61	0	69	0	133	4	100	6	92	1
10:00	624	16	59	4	51	3	54	0	83	4	168	2	142	3	67	0
11:00	644	16	45	1	45	0	67	2	73	1	194	5	150	4	70	3
Not Reported	4	0	0	0	0	0	1	0	0	0	0	0	2	0	1	0
<b>TOTALS</b>	<b>7,698</b>	<b>221</b>	<b>736</b>	<b>23</b>	<b>709</b>	<b>21</b>	<b>746</b>	<b>19</b>	<b>843</b>	<b>23</b>	<b>1,449</b>	<b>32</b>	<b>1,829</b>	<b>59</b>	<b>1,386</b>	<b>44</b>

# **ARIZONA**

## **MOTOR VEHICLE CRASH FACTS**

### **2018**





# 2018 Motor Vehicle Crash Facts for the State of Arizona

*Prepared by:*  
*The Arizona Department of Transportation*  
*Transportation Systems Management and Operations*

**Publication Date: June 18, 2019**



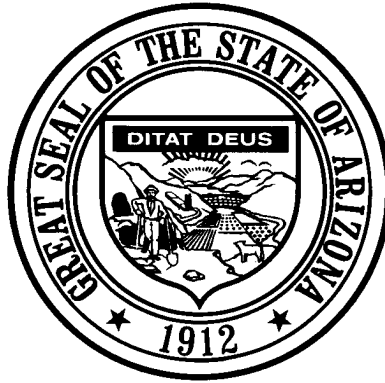
This publication is an annual statistical review of the motor vehicle crashes in the State of Arizona for the calendar year 2018. The results are compiled from Arizona Traffic Crash Reports submitted to the Arizona Department of Transportation by state, county, city, tribal, and other law enforcement agencies. Specific inquiries regarding the data in this report should be directed to:

**The Arizona Department of Transportation**  
**Transportation Systems Management and Operations**  
**Traffic Safety Section**  
**1615 West Jackson Street**  
**Phoenix, AZ 85007**

**E-mail: [azcrashfacts@azdot.gov](mailto:azcrashfacts@azdot.gov)**

In order to provide the most current information, preliminary data is utilized when necessary. For this reason, previous or future reports may differ slightly and we encourage you to refer to the latest issue of Motor Vehicle Crash Facts.

This issue as well as previous issues of this publication may be viewed and downloaded from the ADOT Web Site:  
[www.azdot.gov/crashfacts](http://www.azdot.gov/crashfacts)



**Douglas A. Ducey**  
Governor

**Arizona Department of Transportation**

**John S. Halikowski**  
Director

**State Transportation Board**

**Jack Sellers – District 1**  
Chairman

**Michael S. Hammond – District 2**  
Vice Chairman

Members

**Sam Elters – District 1**  
**Steve Stratton – District 4**  
**Jesse Thompson – District 5**  
**Gary Knight – District 6**



**OVERVIEW**

**Section 1: – Highlights and Historical Trends ..... 1**

**Section 2: – Geographic Location..... 9**

**Section 3: – Crash Descriptions ..... 17**

**Section 4: – Safety Devices ..... 23**

**Section 5: – Motor Vehicle and Driver Descriptions ..... 26**

**Section 6: – Alcohol Related Crashes..... 33**

**Section 7: – Pedestrian and Pedalcyclist Crashes ..... 42**

**Section 8: – Motorcycle (MC) Crashes ..... 48**

**Acknowledgements ..... 58**

# 2018 Arizona Crash Facts Summary

## Table of Contents

<b>Section 1: Highlights and Historical Trends</b> .....	<b>1</b>
Arizona Crash Facts Summary and Comparison.....	2
Arizona at a Glance – 2018.....	2
Licensed Drivers, Motor Vehicle Registration and Crash History in Arizona.....	3
Historical Trends – VMT and Rates.....	3
Statewide Economic Loss Due to Motor Vehicle Crashes.....	4
State Adjusted Crash Costs.....	4
Traffic Crashes in Arizona by Year.....	5
Victims of Motor Vehicle Crashes.....	6
Suspected Serious Injuries by Person Type 2014-2018.....	6
Young Drivers (age 15-24) killed in crashes 2014-2018.....	6
Vehicle Miles Traveled.....	7
Arizona Fatality Rate vs. Injury Rate.....	7
Traffic Fatalities by Geographic Region.....	7
Traffic Injuries by Geographic Region.....	7
Holiday Crash Statistics.....	8
<b>Section 2: Geographic Location</b> .....	<b>9</b>
Crash Severity by First Harmful Event Statewide.....	10
Crashes by County.....	10
Crash Severity by First Harmful Event in Urban Areas.....	11
Crash Severity by First Harmful Event in Rural Areas.....	11
Analysis by Jurisdiction.....	12
Total Fatalities by County for 2017 and 2018.....	15
Urban and Rural Crashes by Day of Week.....	16
Urban and Rural Fatal Crashes by Day of Week.....	16
All Urban and Rural Crashes vs. Urban and Rural Fatal Crashes by Month.....	16
<b>Section 3: Crash Descriptions</b> .....	<b>17</b>
Manner of Collision in Multi-Vehicle Crashes.....	18
Lighting Conditions.....	18
Weather Conditions.....	18
Road Surface Conditions.....	19
Roadway Grade.....	19
Roadway Alignment.....	19
All Crashes vs. Fatal Crashes by Time of Day - Weekdays.....	20
All Crashes vs. Fatal Crashes by Time of Day - Weekends.....	20
Crashes by Day of Week.....	21
Fatal Crashes by Day of Week.....	21
All Crashes vs. Fatal Crashes by Month.....	21
Crashes by Hour and Day of Week.....	22
<b>Section 4: Safety Devices</b> .....	<b>23</b>
Child Safety Device Usage (less than five years old).....	24
Driver Safety Device Usage.....	24
Passenger Safety Device Usage.....	24
Driver Safety Device Usage by Gender.....	25
Driver Safety Device Usage by Age.....	25
<b>Section 5: Motor Vehicle and Driver Descriptions</b> .....	<b>26</b>
Arizona Motor Vehicle Registrations.....	27
Motor Vehicle Crash Involvement by Vehicle Type.....	27
Hit and Run Drivers Involved in Crashes.....	28

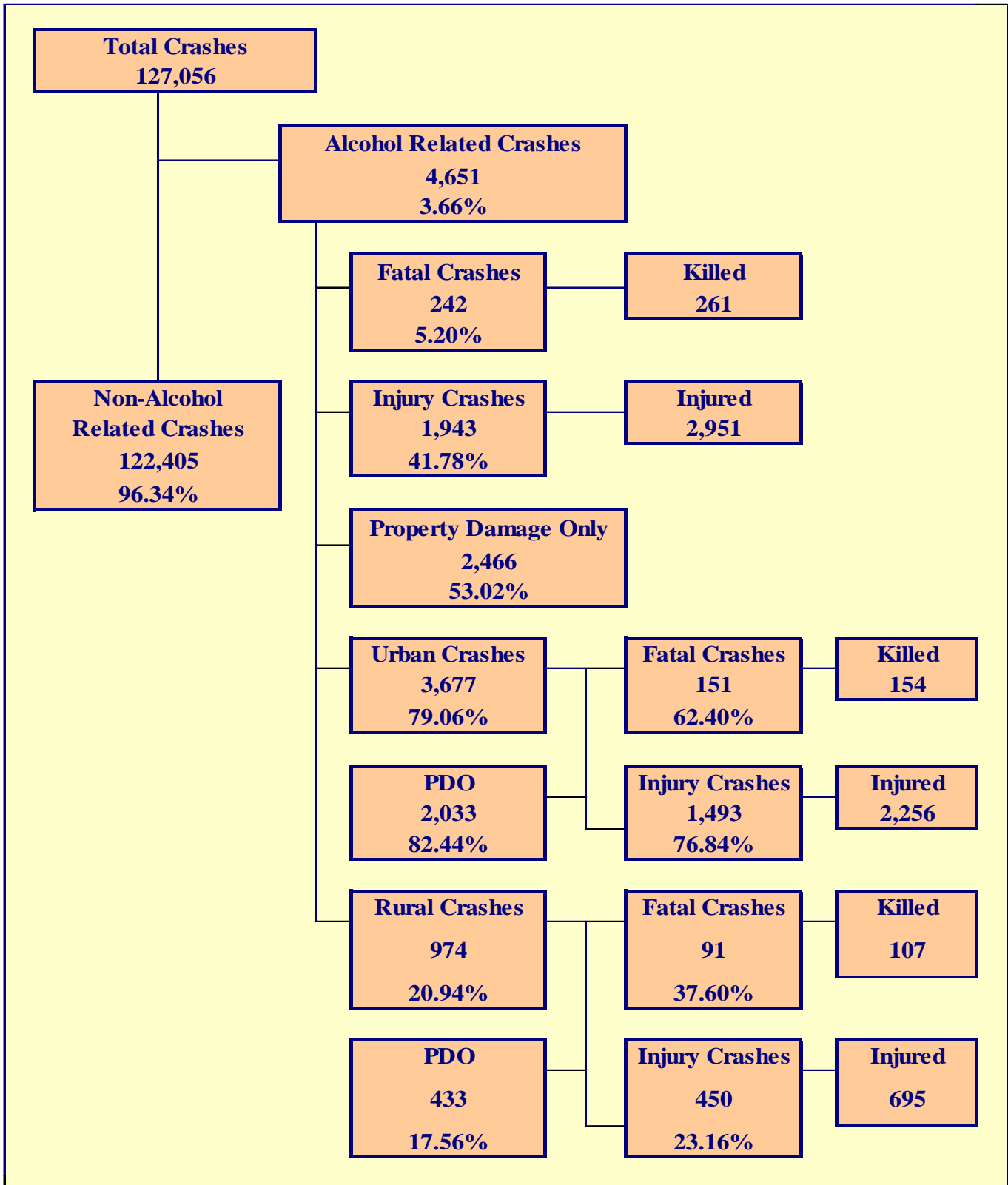
# 2018 Arizona Crash Facts Summary

Gender of Drivers Involved in Crashes.....	28
License Status of Drivers Involved in Crashes.....	28
Passengers Killed and Injured by Age and Gender.....	28
Drivers and Passengers Killed and Injured by Vehicle Type.....	29
Drivers Killed and Injured by Age and Gender.....	29
Licensed Drivers in Arizona by Age.....	30
Driver Involvement by Age.....	30
Driver Violations.....	31
Driver Physical Condition.....	31
Distracted Driving Behavior.....	32
Secondary Crashes.....	32
<b>Section 6: Alcohol Related Crashes.....</b>	<b>33</b>
Economic Loss Due to Alcohol Related Crashes in Arizona for 2018.....	34
Alcohol Related Crash History.....	34
Manner of Collision in Alcohol Related Crashes.....	34
Alcohol Related Crashes by First Harmful Event.....	35
Alcohol Related Crashes by Vehicle Type.....	35
Lighting Conditions in Alcohol Related Crashes.....	36
Road Surface Conditions in Alcohol Related Crashes.....	36
Gender of Drivers Involved in Alcohol Related Crashes.....	36
Driver Involvement by Age in Alcohol Related Crashes.....	37
When Alcohol Related Crashes Occurred in 2018.....	37
Safety Device Usage for Drinking Drivers.....	37
Persons Killed and Injured in Alcohol Related Crashes.....	38
Alcohol Related Crashes by County.....	38
All Alcohol Related Crashes vs. Fatal Alcohol Related Crashes by Day of Week.....	39
All Alcohol Related Crashes vs. Fatal Alcohol Related Crashes by Month.....	39
All Alcohol Related Crashes vs. Fatal Alcohol Related Crashes - Weekdays.....	40
All Alcohol Related Crashes vs. Fatal Alcohol Related Crashes - Weekends.....	40
Alcohol Related Crashes by Hour and Day of Week.....	41
<b>Section 7: Pedestrian and Pedalcyclist Crashes.....</b>	<b>42</b>
Pedestrians Killed and Injured By Age and Gender.....	43
Pedestrian Crashes by Geographic Location.....	43
Pedestrian Crash History.....	43
Pedestrians Killed by Age and Action.....	44
Pedestrians Injured by Age and Action.....	44
Pedestrian Physical Condition in Motor Vehicle Crashes.....	44
Lighting Conditions in Pedestrian Crashes.....	45
Weather Conditions in Pedestrian Crashes.....	45
Pedalcyclists Killed and Injured by Age and Gender.....	45
Pedalcycle Crashes by Geographic Location.....	46
Pedalcycle Crash History.....	46
Lighting Conditions in Pedalcyclist Crashes.....	46
Weather Conditions in Pedalcyclist Crashes.....	46
Pedestrian Crashes by County.....	47
Pedalcyclist Crashes by County.....	47
<b>Section 8: Motorcycle (MC) Crashes.....</b>	<b>48</b>
MC Fatalities by Year.....	49
MC Registrations in Arizona.....	49
Fatality Rate per Registered MC.....	49
Percent of MC Crashes to All Crashes.....	49
MC Crashes by First Harmful Event.....	50
Lighting Conditions in MC Crashes.....	50
Road Surface Conditions in MC Crashes.....	50
MC Crashes by Geographic Location.....	51

## 2018 Arizona Crash Facts Summary

---

Operator Involvement by Age in MC Crashes.....	51
MC Operator Physical Condition.....	51
Helmet Use by Gender.....	52
MC Operator’s Helmet Use.....	52
MC Passenger’s Helmet Use.....	52
MC Operators and Passengers Killed and Injured.....	53
MC Operator Violations.....	53
All MC Crashes vs. Fatal MC Crashes by Time of Day - Weekdays.....	54
All MC Crashes vs. Fatal MC Crashes by Time of Day - Weekends.....	54
All MC Crashes vs. Fatal MC Crashes by Day of Week.....	55
Alcohol Related MC Crashes vs. Fatal Alcohol Related MC Crashes by Day of Week.....	55
MC Crashes by Hour and Day of Week.....	56
MC Crashes by County.....	57
Manner of Collision in MC Crashes.....	57
<b>Acknowledgements.....</b>	<b>58</b>



## Section 6: – Alcohol Related Crashes

The statistics in the Alcohol Related section represent those crashes where the investigating officer indicated that a driver, pedestrian, or pedalcyclist had been drinking an alcoholic beverage and may or may not be substantiated by a blood or breath test. No assumption is to be made that the person was legally intoxicated (blood alcohol content of 0.08% or higher) at the time of the crash.

**Table 6 – 1  
Economic Loss Due to Alcohol Related Crashes in Arizona for 2018**

Fatalities	\$2,490,630,084
Suspected Serious Injuries	\$274,210,780
Suspected Minor Injuries	\$238,860,020
Possible Injuries	\$114,484,293
Property Damage Only	\$26,728,974
<b>TOTAL</b>	<b>\$3,144,914,151</b>

Refer to note on Page 4 for Economic Loss Estimates

**Table 6 – 2  
Alcohol Related Crash History**

Year	Alcohol Related Crashes	Percent of all Crashes	Persons Killed	Percent of all Fatalities	Persons Injured	Percent of all Injuries
<b>2014</b>	4,932	4.49%	275	35.53%	3,206	6.27%
<b>2015</b>	5,016	4.29%	329	36.68%	3,285	6.10%
<b>2016</b>	4,960	3.90%	302	31.72%	3,345	5.88%
<b>2017</b>	4,916	3.85%	324	32.46%	3,176	5.68%
<b>2018</b>	4,651	3.66%	261	25.84%	2,951	5.53%

**Table 6 – 3  
Manner of Collision in Alcohol Related Crashes**

Manner of Collision Type	Number of Crashes							
	Total	Percent of All Crashes	Fatal	Percent of Fatal Crashes	Injury	Percent of Injury Crashes	PDO	Percent of PDO Crashes
<b>Angle</b>	410	14.68%	14	8.43%	215	17.99%	181	12.64%
<b>Left Turn</b>	288	10.31%	11	6.63%	155	12.97%	122	8.52%
<b>Rear End</b>	1,144	40.96%	17	10.24%	450	37.66%	677	47.28%
<b>Head-On</b>	186	6.66%	21	12.65%	91	7.62%	74	5.17%
<b>Sideswipe (same)</b>	327	11.71%	5	3.01%	95	7.95%	227	15.85%
<b>Sideswipe (opposite)</b>	95	3.40%	4	2.41%	25	2.09%	66	4.61%
<b>U-Turn</b>	5	0.18%	0	0.00%	4	0.33%	1	0.07%
<b>Other*</b>	325	11.64%	91	54.82%	153	12.80%	81	5.66%
<b>Unknown</b>	13	0.47%	3	1.81%	7	0.59%	3	0.21%
<b>TOTAL</b>	<b>2,793</b>	<b>100.00%</b>	<b>166</b>	<b>100.00%</b>	<b>1,195</b>	<b>100.00%</b>	<b>1,432</b>	<b>100.00%</b>

Note: Includes only multi-vehicle alcohol related crashes

\*Other includes pedestrian and pedalcyclist crashes

## Section 6: – Alcohol Related Crashes

**Table 6 – 4**  
**Alcohol Related Crashes by First Harmful Event**

First Harmful Event Type	Number of Crashes				Number of Persons	
	Total	Fatal	Injury	PDO	Killed	Injured
Collision with Motor Vehicle in Transport	2,112	77	925	1,110	89	1,687
Overturning	229	27	164	38	31	216
Collision with Pedestrian	194	74	119	1	74	133
Collision with Pedalcyclist	28	5	22	1	5	25
Collision with Animal	8	0	3	5	0	5
Collision with Fixed Object	1,623	56	590	977	59	737
Collision with Non-fixed Object*	360	0	87	273	0	107
Vehicle Fire or Explosion	0	0	0	0	0	0
Other Non-collision**	2	1	1	0	1	1
Unknown	95	2	32	61	2	40
<b>TOTAL</b>	<b>4,651</b>	<b>242</b>	<b>1,943</b>	<b>2,466</b>	<b>261</b>	<b>2,951</b>
*Includes Collision with Parked Vehicles, Trains, Railway Vehicles, and Work Zone Equipment						
**Includes Vehicle Immersion, Jackknife, and Cargo Loss or Shift						

**Table 6 – 5**  
**Alcohol Related Crashes by Vehicle Type**

Motor Vehicle Type	Number of Vehicles				
	Total	Percent of Total	In Fatal Crashes	In Injury Crashes	In PDO Crashes
Passenger Cars (Sedans, Convertibles, etc.)	2,486	55.442%	62	975	1,449
Station Wagons	836	18.644%	30	357	449
Pickup Trucks	739	16.481%	38	301	400
Vans	37	0.825%	0	14	23
Truck Tractor (with or without Semi-Trailer)	7	0.156%	0	1	6
Concrete Mixer Trucks	0	0.000%	0	0	0
Dump Trucks	0	0.000%	0	0	0
Garbage Trucks	0	0.000%	0	0	0
Tanker Trucks	1	0.022%	0	1	0
Wrecker or Tow Trucks	2	0.045%	1	0	1
Other Truck Combinations	99	2.208%	0	36	63
School Bus	0	0.000%	0	0	0
Commercial or Non-Commercial Bus	1	0.022%	0	1	0
Motorcycle (two or three wheel)	152	3.390%	40	97	15
All Terrain Vehicle or Cycle	18	0.401%	2	13	3
Moped	1	0.022%	0	1	0
Recreational Vehicle	0	0.000%	0	0	0
Motor Home or House Car	0	0.000%	0	0	0
Fire Trucks	0	0.000%	0	0	0
Ambulances	0	0.000%	0	0	0
Other Types Of Vehicles	5	0.112%	0	4	1
Vehicle Type Unknown	100	2.230%	5	34	61
<b>TOTAL</b>	<b>4,484</b>	<b>100.00%</b>	<b>178</b>	<b>1,835</b>	<b>2,471</b>

## Section 6: – Alcohol Related Crashes

Table 6 – 6  
**Lighting Conditions in Alcohol Related Crashes**

Type of Lighting Conditions	Number of Crashes				Number of Persons	
	Total	Fatal	Injury	PDO	Killed	Injured
Daylight	1,344	62	595	687	68	952
Dawn	72	1	35	36	1	50
Dusk	124	8	52	64	9	79
Dark - Lighted	2,345	99	908	1,338	105	1,333
Dark - Not Lighted	698	46	336	316	52	500
Dark - Unknown Lighting	31	11	5	15	11	12
Unknown	37	15	12	10	15	25
<b>TOTAL</b>	<b>4,651</b>	<b>242</b>	<b>1,943</b>	<b>2,466</b>	<b>261</b>	<b>2,951</b>

Table 6 – 7  
**Road Surface Conditions in Alcohol Related Crashes**

Type of Road Surface Condition	Number of Drivers				Number of Persons	
	Total	In Fatal Crashes	In Injury Crashes	In PDO Crashes	Killed	Injured
Dry	4,203	141	1,733	2,329	195	2,744
Wet	177	8	76	93	12	136
Snow/Slush	12	0	2	10	0	2
Ice/Frost	5	0	1	4	0	1
Water (standing or moving)	4	0	3	1	0	5
Mud, Dirt, Gravel, Sand	34	2	16	16	2	29
Other	3	0	1	2	0	1
Unknown	46	27	3	16	52	33
<b>TOTAL</b>	<b>4,484</b>	<b>178</b>	<b>1,835</b>	<b>2,471</b>	<b>261</b>	<b>2,951</b>

Table 6 – 8  
**Gender of Drivers Involved in Alcohol Related Crashes**

Gender of Driver	Number of Drivers							
	Total	Percent of Total	In Fatal Crashes	Percent of Fatal	In Injury Crashes	Percent of Injury	In PDO Crashes	Percent of PDO
Male	3,238	72.21%	145	81.46%	1,330	72.48%	1,763	71.35%
Female	1,220	27.21%	33	18.54%	504	27.47%	683	27.64%
Unknown	26	0.58%	0	0.00%	1	0.05%	25	1.01%
<b>TOTAL</b>	<b>4,484</b>	<b>100.00%</b>	<b>178</b>	<b>100.00%</b>	<b>1,835</b>	<b>100.00%</b>	<b>2,471</b>	<b>100.00%</b>

*In total crashes across the state, 53.51% of the drivers were males.  
When alcohol was involved, males accounted for 72.21% of the drivers.*



## Section 6: – Alcohol Related Crashes

**Table 6 – 9  
Driver Involvement by Age in Alcohol Related Crashes**

Driver Age Group	Number of Drivers							
	Total	Percent of Total	In Fatal Crashes	Percent of Fatal	In Injury Crashes	Percent of Injury	In PDO Crashes	Percent of PDO
15 & Under	1	0.02%	0	0.00%	0	0.00%	1	0.04%
16	11	0.25%	1	0.56%	5	0.27%	5	0.20%
17	25	0.56%	1	0.56%	14	0.76%	10	0.40%
18	47	1.05%	1	0.56%	23	1.25%	23	0.93%
19	77	1.72%	2	1.12%	35	1.91%	40	1.62%
20	96	2.14%	2	1.12%	48	2.62%	46	1.86%
21	181	4.04%	5	2.81%	73	3.98%	103	4.17%
22	188	4.19%	6	3.37%	78	4.25%	104	4.21%
23	201	4.48%	10	5.62%	88	4.80%	103	4.17%
24	186	4.15%	4	2.25%	73	3.98%	109	4.41%
25-34	1,425	31.78%	55	30.90%	545	29.70%	825	33.39%
35-44	829	18.49%	28	15.73%	349	19.02%	452	18.29%
45-54	569	12.69%	23	12.92%	250	13.62%	296	11.98%
55-64	411	9.17%	21	11.80%	173	9.43%	217	8.78%
65-74	164	3.66%	15	8.43%	66	3.60%	83	3.36%
75 & Older	34	0.76%	2	1.12%	11	0.60%	21	0.85%
Unknown	39	0.87%	2	1.12%	4	0.22%	33	1.34%
<b>TOTAL</b>	<b>4,484</b>	<b>100.00%</b>	<b>178</b>	<b>100.00%</b>	<b>1,835</b>	<b>100.00%</b>	<b>2,471</b>	<b>100.00%</b>

**Table 6 – 10  
When Alcohol Related Crashes Occurred in 2018**

Time of Day	Total	Weekday	Weekend*
Daytime**	1,305	791	514
Nighttime	3,346	1,321	2,025
<b>Total</b>	<b>4,651</b>	<b>2,112</b>	<b>2,539</b>
*Weekend begins at 6:00 p.m. on Friday and continues until 6:00 a.m. Monday. All other times and days are considered Weekdays.			
**Daytime refers to the hours between 6:00 a.m. and 6:00 p.m.			

**Table 6 – 11  
Safety Device Usage for Drinking Drivers**

Severity of Injury	Safety Device Not Used	Lap Belt	Lap & Shoulder Belt	Protective Helmet	Other	Unknown	Totals
No Injury	138	38	1,888	6	2	771	2,843
Unknown Injury	2	1	36	0	0	118	157
Possible Injury	55	4	254	4	0	122	439
Suspected Minor Injury	112	3	354	13	1	184	667
Suspected Serious Injury	104	1	57	12	0	71	245
Fatal Injury	73	0	24	14	0	22	133
<b>TOTALS</b>	<b>484</b>	<b>47</b>	<b>2,613</b>	<b>49</b>	<b>3</b>	<b>1,288</b>	<b>4,484</b>

## Section 6: – Alcohol Related Crashes

Table 6 – 12

### Persons Killed and Injured in Alcohol Related Crashes

Age of Victim	Persons Killed			Persons Injured			
	Total	Male	Female	Total	Male	Female	Gender Unknown
0-4	0	0	0	41	19	22	0
5-9	1	1	0	47	27	20	0
10-14	2	2	0	44	21	23	0
15-19	8	3	5	187	100	87	0
20-24	25	17	8	499	310	189	0
25-34	77	61	16	715	471	244	0
35-44	44	35	9	495	310	185	0
45-54	38	34	4	400	265	135	0
55-64	35	25	10	292	186	106	0
65-74	25	20	5	137	78	59	0
75 & Older	4	4	0	44	21	23	0
Unknown	2	2	0	50	21	21	8
<b>TOTAL</b>	<b>261</b>	<b>204</b>	<b>57</b>	<b>2,951</b>	<b>1,829</b>	<b>1,114</b>	<b>8</b>

Table 6 – 13

### Alcohol Related Crashes by County

County	Number of Crashes				Number of Persons	
	Total	Fatal	Injury	PDO	Killed	Injured
Apache	17	2	7	8	2	9
Cochise	55	4	27	24	5	44
Coconino	172	6	96	70	8	159
Gila	45	1	24	20	1	38
Graham	16	0	7	9	0	9
Greenlee	2	0	2	0	0	2
La Paz	16	4	9	3	6	15
Maricopa	2,958	147	1,167	1,644	153	1,761
Mohave	176	8	72	96	8	94
Navajo	89	9	38	42	12	58
Pima	611	34	274	303	37	427
Pinal	204	13	95	96	14	154
Santa Cruz	14	2	4	8	2	4
Yavapai	161	6	75	80	7	108
Yuma	115	6	46	63	6	69
<b>TOTAL</b>	<b>4,651</b>	<b>242</b>	<b>1,943</b>	<b>2,466</b>	<b>261</b>	<b>2,951</b>

## Section 6: – Alcohol Related Crashes

Chart 6 – 1

### All Alcohol Related Crashes vs. Fatal Alcohol Related Crashes by Day of Week

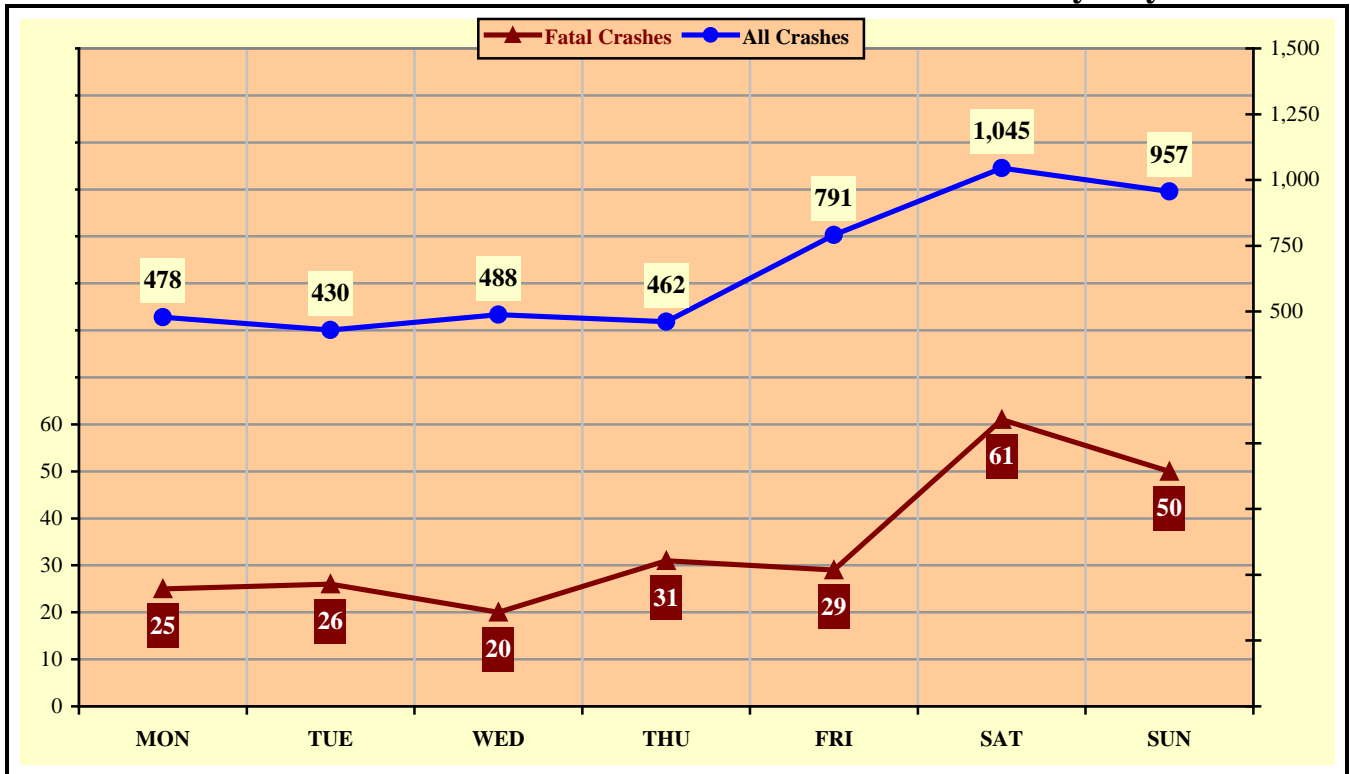
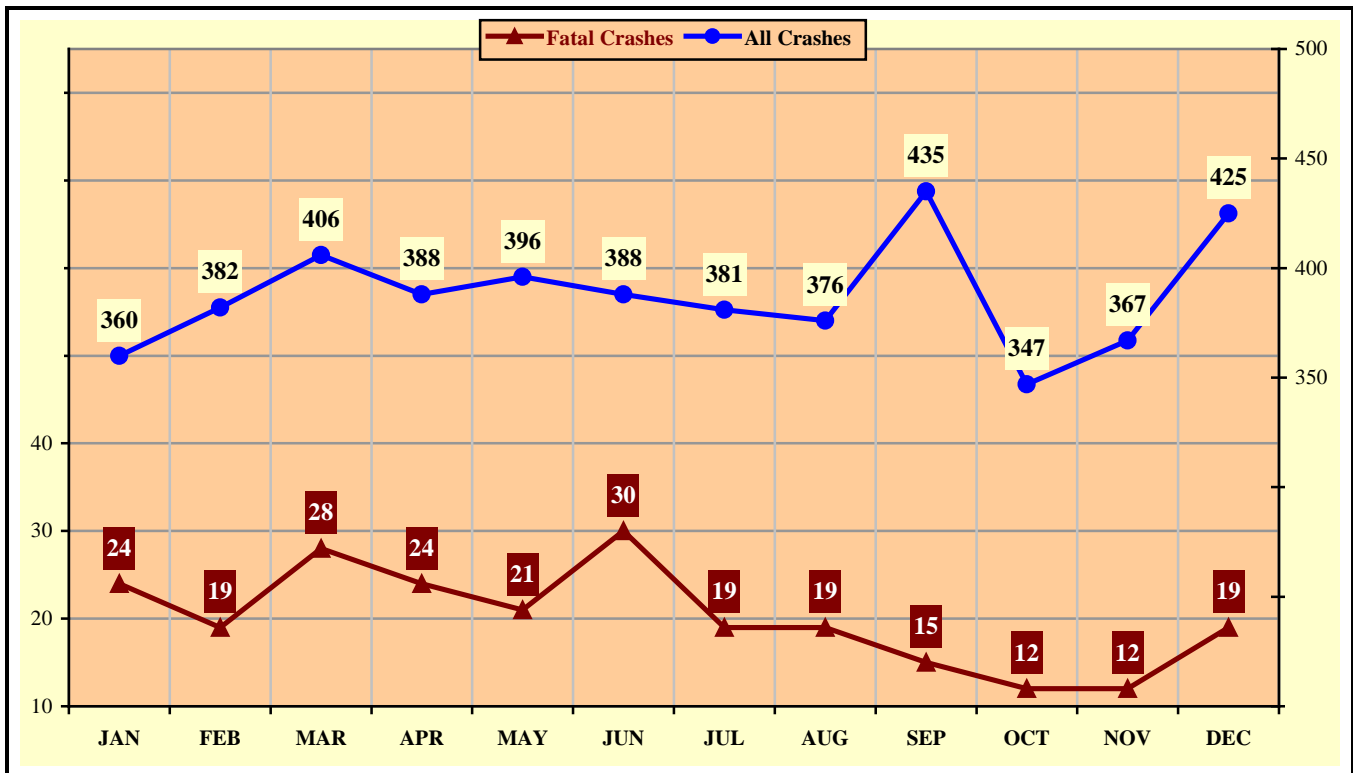


Chart 6 – 2

### All Alcohol Related Crashes vs. Fatal Alcohol Related Crashes by Month



Section 6: – Alcohol Related Crashes

Chart 6 – 3

All Alcohol Related Crashes vs. Fatal Alcohol Related Crashes - Weekdays

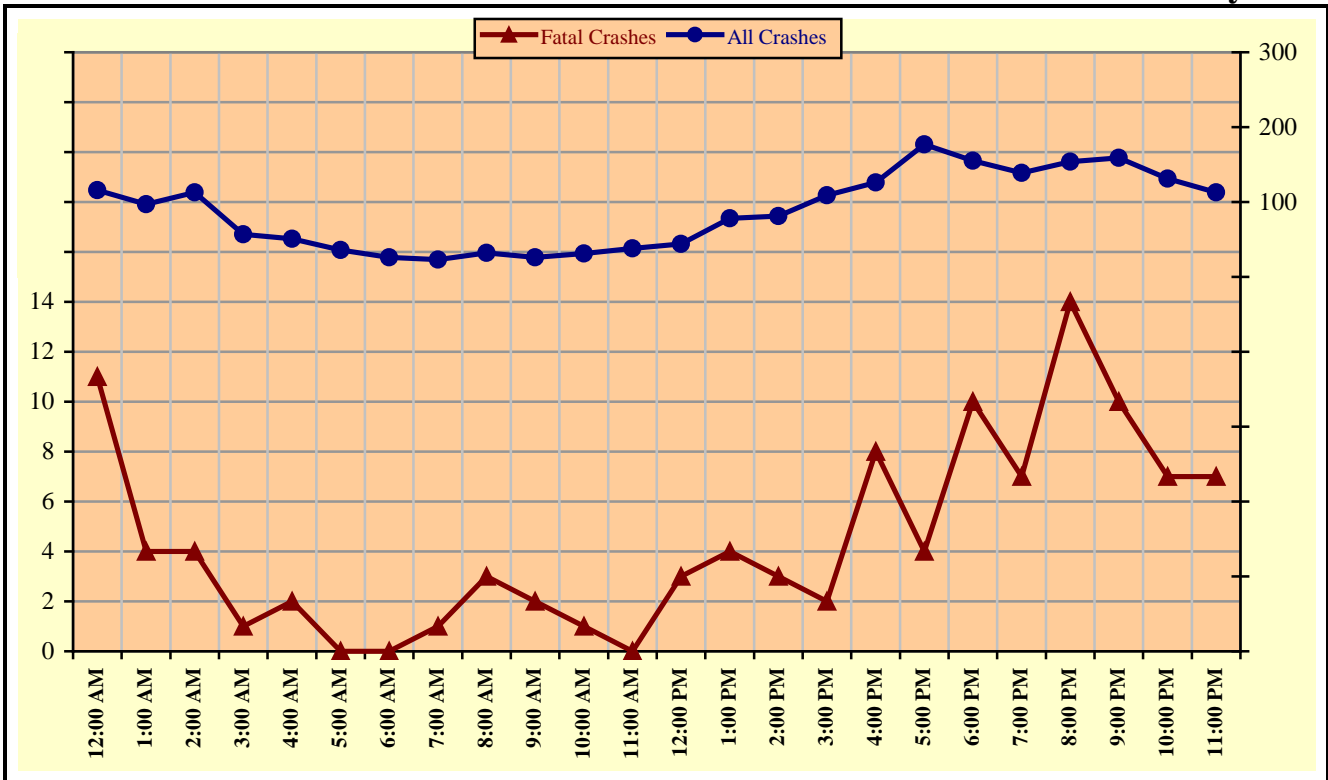
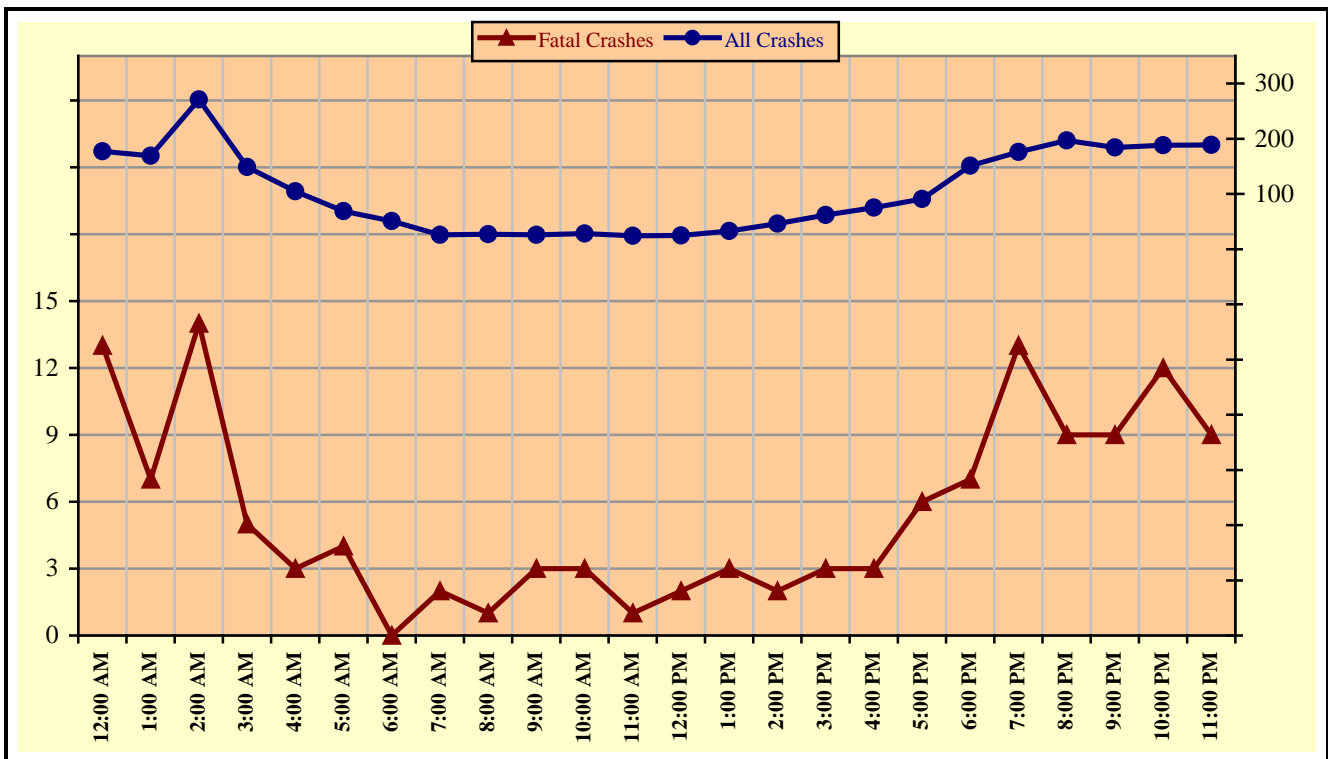


Chart 6 – 4

All Alcohol Related Crashes vs. Fatal Alcohol Related Crashes - Weekends



## Section 6: – Alcohol Related Crashes

Table 6 – 14

### Alcohol Related Crashes by Hour and Day of Week

Hour Beginning	Total Crashes		Monday		Tuesday		Wednesday		Thursday		Friday		Saturday		Sunday		Weekdays		Weekends	
	All	Fatal	All	Fatal	All	Fatal	All	Fatal	All	Fatal	All	Fatal	All	Fatal	All	Fatal	All	Fatal	All	Fatal
12:00 AM	293	24	32	2	22	3	28	1	32	3	34	4	78	6	67	5	116	11	177	13
1:00 AM	266	11	20	1	16	0	23	2	24	1	34	1	69	3	80	3	97	4	169	7
2:00 AM	384	18	40	1	24	1	20	0	21	2	48	1	108	5	123	8	113	4	271	14
3:00 AM	206	6	16	1	7	0	10	0	15	0	25	1	68	3	65	1	57	1	149	5
4:00 AM	156	5	16	1	5	0	6	1	17	0	23	1	44	1	45	1	51	2	105	3
5:00 AM	105	4	10	0	5	0	12	0	4	0	15	0	32	2	27	2	36	0	69	4
6:00 AM	77	0	3	0	8	0	5	0	3	0	7	0	20	0	31	0	26	0	51	0
7:00 AM	49	3	8	0	2	0	4	1	3	0	6	0	15	1	11	1	23	1	26	2
8:00 AM	59	4	10	1	5	0	4	1	5	0	8	1	13	1	14	0	32	3	27	1
9:00 AM	52	5	7	0	3	0	8	0	4	2	4	0	13	2	13	1	26	2	26	3
10:00 AM	59	4	6	1	4	0	7	0	9	0	5	0	11	2	17	1	31	1	28	3
11:00 AM	62	1	8	0	5	0	5	0	10	0	10	0	16	0	8	1	38	0	24	1
12:00 PM	69	5	6	1	6	0	14	2	8	0	10	0	15	1	10	1	44	3	25	2
1:00 PM	111	7	12	0	14	0	11	1	14	2	27	1	11	1	22	2	78	4	33	3
2:00 PM	127	5	16	1	19	1	8	0	16	1	22	0	23	1	23	1	81	3	46	2
3:00 PM	171	5	16	0	23	1	25	1	16	0	29	0	30	2	32	1	109	2	62	3
4:00 PM	201	11	26	1	25	3	25	2	17	1	33	1	34	2	41	1	126	8	75	3
5:00 PM	268	10	32	2	38	0	32	0	27	1	48	1	47	4	44	2	177	4	91	6
6:00 PM	306	17	36	4	34	4	49	0	36	2	52	2	53	3	46	2	155	10	151	7
7:00 PM	315	20	29	2	35	3	40	1	35	1	58	1	64	7	54	5	139	7	176	13
8:00 PM	351	23	35	2	30	2	38	2	51	8	58	2	79	5	60	2	154	14	197	9
9:00 PM	343	19	29	2	42	3	48	3	40	2	71	2	64	3	49	4	159	10	184	9
10:00 PM	319	19	36	0	27	3	39	2	29	2	79	8	64	2	45	2	131	7	188	12
11:00 PM	302	16	29	2	31	2	27	0	26	3	85	2	74	4	30	3	113	7	189	9
<b>TOTAL</b>	<b>4,651</b>	<b>242</b>	<b>478</b>	<b>25</b>	<b>430</b>	<b>26</b>	<b>488</b>	<b>20</b>	<b>462</b>	<b>31</b>	<b>791</b>	<b>29</b>	<b>1,045</b>	<b>61</b>	<b>957</b>	<b>50</b>	<b>2,112</b>	<b>108</b>	<b>2,539</b>	<b>134</b>

*Crashes during Weekends accounted for 54.59% of all Alcohol Related crashes and 55.37% of Alcohol Related Fatal Crashes.*

# ARIZONA

## MOTOR VEHICLE CRASH FACTS

### 2019





# 2019 Motor Vehicle Crash Facts for the State of Arizona

*Prepared by:*  
*The Arizona Department of Transportation*  
*Transportation Systems Management and Operations*

**Publication Date: June 29, 2020**



This publication is an annual statistical review of the motor vehicle crashes in the State of Arizona for the calendar year 2019. The results are compiled from Arizona Traffic Crash Reports submitted to the Arizona Department of Transportation by state, county, city, tribal, and other law enforcement agencies. Specific inquiries regarding the data in this report should be directed to:

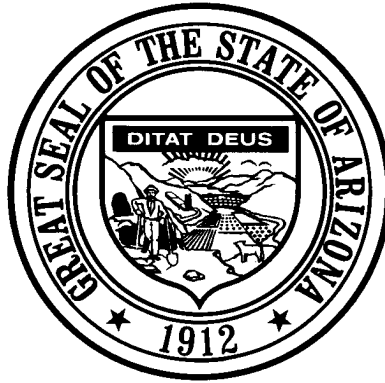
**The Arizona Department of Transportation**  
**Transportation Systems Management and Operations**  
**Traffic Safety Section**  
**1615 West Jackson Street**  
**Phoenix, AZ 85007**

**E-mail: [azcrashfacts@azdot.gov](mailto:azcrashfacts@azdot.gov)**

In order to provide the most current information, preliminary data is utilized when necessary. For this reason, previous or future reports may differ slightly and we encourage you to refer to the latest issue of Motor Vehicle Crash Facts.

This issue as well as previous issues of this publication may be viewed and downloaded from the ADOT Web Site:  
[www.azdot.gov/crashfacts](http://www.azdot.gov/crashfacts)





**Douglas A. Ducey**  
Governor

**Arizona Department of Transportation**

**John S. Halikowski**  
Director

**State Transportation Board**

**Michael S. Hammond – District 2**  
Chairman

**Steve Stratton – District 4**  
Vice Chairman

Members

**Sam Elters – District 1**  
**Jenn Daniels – District 1**  
**Richard Searle – District 3**  
**Jesse Thompson – District 5**  
**Gary Knight – District 6**

**OVERVIEW**

**Section 1: – Highlights and Historical Trends ..... 1**

**Section 2: – Geographic Location..... 9**

**Section 3: – Crash Descriptions ..... 17**

**Section 4: – Safety Devices ..... 23**

**Section 5: – Motor Vehicle and Driver Descriptions ..... 26**

**Section 6: – Alcohol Related Crashes..... 33**

**Section 7: – Pedestrian and Pedalcyclist Crashes ..... 42**

**Section 8: – Motorcycle (MC) Crashes ..... 48**

**Acknowledgements ..... 58**

# 2019 Arizona Crash Facts Summary

## Table of Contents

<b>Section 1: Highlights and Historical Trends</b> .....	<b>1</b>
Arizona Crash Facts Summary and Comparison.....	2
Arizona at a Glance – 2019.....	2
Licensed Drivers, Motor Vehicle Registration and Crash History in Arizona.....	3
Historical Trends – VMT and Rates.....	3
Statewide Economic Loss Due to Motor Vehicle Crashes.....	4
State Adjusted Crash Costs.....	4
Traffic Crashes in Arizona by Year.....	5
Victims of Motor Vehicle Crashes.....	6
Suspected Serious Injuries by Person Type 2015-2019.....	6
Young Drivers (age 15-24) killed in crashes 2015-2019.....	6
State Highway System (SHS) vs Local Road Fatalities.....	7
Arizona Fatality Rate vs. Injury Rate.....	7
Traffic Fatalities by Geographic Region.....	7
Traffic Injuries by Geographic Region.....	7
Holiday Crash Statistics.....	8
<b>Section 2: Geographic Location</b> .....	<b>9</b>
Crash Severity by First Harmful Event Statewide.....	10
Crashes by County.....	10
Crash Severity by First Harmful Event in Urban Areas.....	11
Crash Severity by First Harmful Event in Rural Areas.....	11
Analysis by Jurisdiction.....	12
Total Fatalities by County for 2018 and 2019.....	15
Urban and Rural Crashes by Day of Week.....	16
Urban and Rural Fatal Crashes by Day of Week.....	16
All Urban and Rural Crashes vs. Urban and Rural Fatal Crashes by Month.....	16
<b>Section 3: Crash Descriptions</b> .....	<b>17</b>
Manner of Collision in Multi-Vehicle Crashes.....	18
Lighting Conditions.....	18
Weather Conditions.....	18
Road Surface Conditions.....	19
Roadway Grade.....	19
Roadway Alignment.....	19
All Crashes vs. Fatal Crashes by Time of Day - Weekdays.....	20
All Crashes vs. Fatal Crashes by Time of Day - Weekends.....	20
Crashes by Day of Week.....	21
Fatal Crashes by Day of Week.....	21
All Crashes vs. Fatal Crashes by Month.....	21
Crashes by Hour and Day of Week.....	22
<b>Section 4: Safety Devices</b> .....	<b>23</b>
Child Safety Device Usage (less than five years old).....	24
Driver Safety Device Usage.....	24
Passenger Safety Device Usage.....	24
Driver Safety Device Usage by Gender.....	25
Driver Safety Device Usage by Age.....	25
<b>Section 5: Motor Vehicle and Driver Descriptions</b> .....	<b>26</b>
Arizona Motor Vehicle Registrations.....	27
Motor Vehicle Crash Involvement by Vehicle Type.....	27
Hit and Run Drivers Involved in Crashes.....	28

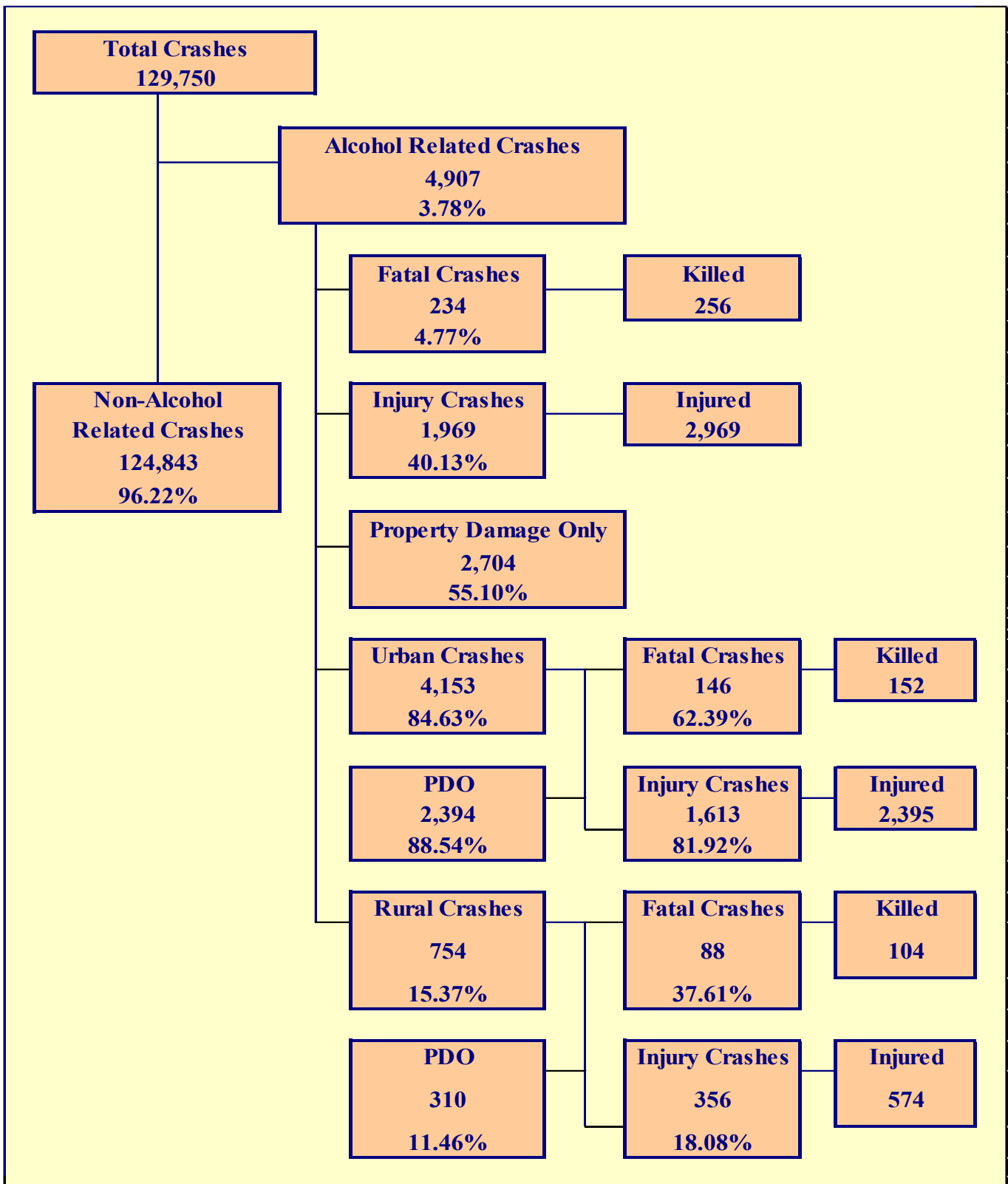
# 2019 Arizona Crash Facts Summary

Gender of Drivers Involved in Crashes.....	28
License Status of Drivers Involved in Crashes.....	28
Passengers Killed and Injured by Age and Gender.....	28
Drivers and Passengers Killed and Injured by Vehicle Type.....	29
Drivers Killed and Injured by Age and Gender.....	29
Licensed Drivers in Arizona by Age.....	30
Driver Involvement by Age.....	30
Driver Violations.....	31
Driver Physical Condition.....	31
Distracted Driving Behavior.....	32
Secondary Crashes.....	32
<b>Section 6: Alcohol Related Crashes.....</b>	<b>33</b>
Economic Loss Due to Alcohol Related Crashes in Arizona for 2019.....	34
Alcohol Related Crash History.....	34
Manner of Collision in Alcohol Related Crashes.....	34
Alcohol Related Crashes by First Harmful Event.....	35
Alcohol Related Crashes by Vehicle Type.....	35
Lighting Conditions in Alcohol Related Crashes.....	36
Road Surface Conditions in Alcohol Related Crashes.....	36
Gender of Drivers Involved in Alcohol Related Crashes.....	36
Driver Involvement by Age in Alcohol Related Crashes.....	37
When Alcohol Related Crashes Occurred in 2019.....	37
Safety Device Usage for Drinking Drivers.....	37
Persons Killed and Injured in Alcohol Related Crashes.....	38
Alcohol Related Crashes by County.....	38
All Alcohol Related Crashes vs. Fatal Alcohol Related Crashes by Day of Week.....	39
All Alcohol Related Crashes vs. Fatal Alcohol Related Crashes by Month.....	39
All Alcohol Related Crashes vs. Fatal Alcohol Related Crashes - Weekdays.....	40
All Alcohol Related Crashes vs. Fatal Alcohol Related Crashes - Weekends.....	40
Alcohol Related Crashes by Hour and Day of Week.....	41
<b>Section 7: Pedestrian and Pedalcyclist Crashes.....</b>	<b>42</b>
Pedestrians Killed and Injured By Age and Gender.....	43
Pedestrian Crashes by Geographic Location.....	43
Pedestrian Crash History.....	43
Pedestrians Killed by Age and Action.....	44
Pedestrians Injured by Age and Action.....	44
Pedestrian Physical Condition in Motor Vehicle Crashes.....	44
Lighting Conditions in Pedestrian Crashes.....	45
Weather Conditions in Pedestrian Crashes.....	45
Pedalcyclists Killed and Injured by Age and Gender.....	45
Pedalcycle Crashes by Geographic Location.....	46
Pedalcycle Crash History.....	46
Lighting Conditions in Pedalcyclist Crashes.....	46
Weather Conditions in Pedalcyclist Crashes.....	46
Pedestrian Crashes by County.....	47
Pedalcyclist Crashes by County.....	47
<b>Section 8: Motorcycle (MC) Crashes.....</b>	<b>48</b>
MC Fatalities by Year.....	49
MC Registrations in Arizona.....	49
Fatality Rate per Registered MC.....	49
Percent of MC Crashes to All Crashes.....	49
MC Crashes by First Harmful Event.....	50
Lighting Conditions in MC Crashes.....	50
Road Surface Conditions in MC Crashes.....	50
MC Crashes by Geographic Location.....	51

## 2019 Arizona Crash Facts Summary

---

Operator Involvement by Age in MC Crashes.....	51
MC Operator Physical Condition.....	51
Helmet Use by Gender.....	52
MC Operator’s Helmet Use.....	52
MC Passenger’s Helmet Use.....	52
MC Operators and Passengers Killed and Injured.....	53
MC Operator Violations.....	53
All MC Crashes vs. Fatal MC Crashes by Time of Day - Weekdays.....	54
All MC Crashes vs. Fatal MC Crashes by Time of Day - Weekends.....	54
All MC Crashes vs. Fatal MC Crashes by Day of Week.....	55
Alcohol Related MC Crashes vs. Fatal Alcohol Related MC Crashes by Day of Week.....	55
MC Crashes by Hour and Day of Week.....	56
MC Crashes by County.....	57
Manner of Collision in MC Crashes.....	57
<b>Acknowledgements.....</b>	<b>58</b>





## Section 6: – Alcohol Related Crashes

The statistics in the Alcohol Related section represent those crashes where the investigating officer indicated that a driver, pedestrian, or pedalcyclist had been drinking an alcoholic beverage and may or may not be substantiated by a blood or breath test. No assumption is to be made that the person was legally intoxicated (blood alcohol content of 0.08% or higher) at the time of the crash.

**Table 6 – 1  
Economic Loss Due to Alcohol Related Crashes in Arizona for 2019**

Fatalities	\$2,435,934,976
Suspected Serious Injuries	\$277,451,496
Suspected Minor Injuries	\$191,336,356
Possible Injuries	\$121,917,390
Property Damage Only	\$28,878,720
<b>TOTAL</b>	<b>\$3,055,518,938</b>

Refer to note on Page 4 for Economic Loss Estimates

**Table 6 – 2  
Alcohol Related Crash History**

Year	Alcohol Related Crashes	Percent of all Crashes	Persons Killed	Percent of all Fatalities	Persons Injured	Percent of all Injuries
<b>2015</b>	5,016	4.29%	329	36.68%	3,285	6.10%
<b>2016</b>	4,961	3.90%	302	31.72%	3,347	5.88%
<b>2017</b>	4,917	3.85%	325	32.57%	3,177	5.68%
<b>2018</b>	4,702	3.68%	265	26.21%	3,001	5.59%
<b>2019</b>	4,907	3.78%	256	26.07%	2,969	5.52%

**Table 6 – 3  
Manner of Collision in Alcohol Related Crashes**

Manner of Collision Type	Number of Crashes							
	Total	Percent of All Crashes	Fatal	Percent of Fatal Crashes	Injury	Percent of Injury Crashes	PDO	Percent of PDO Crashes
<b>Angle</b>	432	14.59%	14	10.14%	193	15.61%	225	14.19%
<b>Left Turn</b>	297	10.03%	7	5.07%	150	12.14%	140	8.83%
<b>Rear End</b>	1,240	41.89%	17	12.32%	503	40.70%	720	45.40%
<b>Head-On</b>	229	7.74%	18	13.04%	107	8.66%	104	6.56%
<b>Sideswipe (same)</b>	321	10.84%	2	1.45%	81	6.55%	238	15.01%
<b>Sideswipe (opposite)</b>	118	3.99%	1	0.72%	39	3.16%	78	4.92%
<b>U-Turn</b>	7	0.24%	1	0.72%	3	0.24%	3	0.19%
<b>Other*</b>	294	9.93%	75	54.35%	148	11.97%	71	4.48%
<b>Unknown</b>	22	0.74%	3	2.17%	12	0.97%	7	0.44%
<b>TOTAL</b>	<b>2,960</b>	<b>100.00%</b>	<b>138</b>	<b>100.00%</b>	<b>1,236</b>	<b>100.00%</b>	<b>1,586</b>	<b>100.00%</b>

Note: Includes only multi-vehicle alcohol related crashes

\*Other includes pedestrian and pedalcyclist crashes

## Section 6: – Alcohol Related Crashes

Table 6 – 4

### Alcohol Related Crashes by First Harmful Event

First Harmful Event Type	Number of Crashes				Number of Persons	
	Total	Fatal	Injury	PDO	Killed	Injured
Collision with Motor Vehicle in Transport	2,312	64	980	1,268	82	1,747
Overturning	222	35	135	52	36	204
Collision with Pedestrian	180	67	113	0	67	126
Collision with Pedalcyclist	31	2	29	0	2	30
Collision with Animal	8	1	3	4	1	3
Collision with Fixed Object	1,693	56	600	1,037	59	724
Collision with Non-fixed Object*	400	6	90	304	6	108
Vehicle Fire or Explosion	3	0	0	3	0	0
Other Non-collision**	1	1	0	0	1	0
Unknown	57	2	19	36	2	27
<b>TOTAL</b>	<b>4,907</b>	<b>234</b>	<b>1,969</b>	<b>2,704</b>	<b>256</b>	<b>2,969</b>
*Includes Collision with Parked Vehicles, Trains, Railway Vehicles, and Work Zone Equipment						
**Includes Vehicle Immersion, Jackknife, and Cargo Loss or Shift						

Table 6 – 5

### Alcohol Related Crashes by Vehicle Type

Motor Vehicle Type	Number of Vehicles				
	Total	Percent of Total	In Fatal Crashes	In Injury Crashes	In PDO Crashes
Passenger Cars (Sedans, Convertibles, etc.)	2,546	53.713%	56	972	1,518
Station Wagons	941	19.852%	30	367	544
Pickup Trucks	759	16.013%	38	296	425
Vans	52	1.097%	2	16	34
Truck Tractor (with or without Semi-Trailer)	2	0.042%	0	1	1
Concrete Mixer Trucks	0	0.000%	0	0	0
Dump Trucks	0	0.000%	0	0	0
Garbage Trucks	0	0.000%	0	0	0
Tanker Trucks	0	0.000%	0	0	0
Wrecker or Tow Trucks	0	0.000%	0	0	0
Other Truck Combinations	111	2.342%	0	31	80
School Bus	0	0.000%	0	0	0
Commercial or Non-Commercial Bus	0	0.000%	0	0	0
Motorcycle (two or three wheel)	132	2.785%	37	88	7
All Terrain Vehicle or Cycle	15	0.316%	7	6	2
Golf Carts	5	0.105%	1	3	1
Moped	2	0.042%	2	0	0
Recreational Vehicle	2	0.042%	0	0	2
Motor Home or House Car	2	0.042%	0	0	2
Fire Trucks	0	0.000%	0	0	0
Ambulances	0	0.000%	0	0	0
Other Types Of Vehicles	1	0.021%	0	0	1
Vehicle Type Unknown	170	3.586%	5	73	92
<b>TOTAL</b>	<b>4,740</b>	<b>100.00%</b>	<b>178</b>	<b>1,853</b>	<b>2,709</b>

## Section 6: – Alcohol Related Crashes

Table 6 – 6

### Lighting Conditions in Alcohol Related Crashes

Type of Lighting Conditions	Number of Crashes				Number of Persons	
	Total	Fatal	Injury	PDO	Killed	Injured
Daylight	1,472	58	608	806	69	944
Dawn	65	2	31	32	2	38
Dusk	136	3	63	70	3	109
Dark - Lighted	2,430	88	937	1,405	93	1,371
Dark - Not Lighted	728	64	306	358	68	465
Dark - Unknown Lighting	40	9	12	19	9	17
Unknown	36	10	12	14	12	25
<b>TOTAL</b>	<b>4,907</b>	<b>234</b>	<b>1,969</b>	<b>2,704</b>	<b>256</b>	<b>2,969</b>

Table 6 – 7

### Road Surface Conditions in Alcohol Related Crashes

Type of Road Surface Condition	Number of Drivers				Number of Persons	
	Total	In Fatal Crashes	In Injury Crashes	In PDO Crashes	Killed	Injured
Dry	4,388	143	1,722	2,523	203	2,743
Wet	267	9	107	151	13	174
Snow/Slush	9	1	1	7	1	1
Ice/Frost	11	0	6	5	0	12
Water (standing or moving)	6	1	2	3	1	4
Mud, Dirt, Gravel, Sand	23	5	10	8	5	13
Other	2	0	0	2	0	2
Unknown	34	19	5	10	33	20
<b>TOTAL</b>	<b>4,740</b>	<b>178</b>	<b>1,853</b>	<b>2,709</b>	<b>256</b>	<b>2,969</b>

Table 6 – 8

### Gender of Drivers Involved in Alcohol Related Crashes

Gender of Driver	Number of Drivers							
	Total	Percent of Total	In Fatal Crashes	Percent of Fatal	In Injury Crashes	Percent of Injury	In PDO Crashes	Percent of PDO
Male	3,429	72.34%	140	78.65%	1,355	73.12%	1,934	71.39%
Female	1,290	27.22%	36	20.22%	492	26.55%	762	28.13%
Unknown	21	0.44%	2	1.12%	6	0.32%	13	0.48%
<b>TOTAL</b>	<b>4,740</b>	<b>100.00%</b>	<b>178</b>	<b>100.00%</b>	<b>1,853</b>	<b>100.00%</b>	<b>2,709</b>	<b>100.00%</b>

*In total crashes across the state, 53.62% of the drivers were males. When alcohol was involved, males accounted for 72.34% of the drivers.*

## Section 6: – Alcohol Related Crashes

**Table 6 – 9  
Driver Involvement by Age in Alcohol Related Crashes**

Driver Age Group	Number of Drivers							
	Total	Percent of Total	In Fatal Crashes	Percent of Fatal	In Injury Crashes	Percent of Injury	In PDO Crashes	Percent of PDO
<b>15 &amp; Under</b>	2	0.04%	0	0.00%	1	0.05%	1	0.04%
<b>16</b>	11	0.23%	0	0.00%	4	0.22%	7	0.26%
<b>17</b>	27	0.57%	2	1.12%	13	0.70%	12	0.44%
<b>18</b>	61	1.29%	1	0.56%	20	1.08%	40	1.48%
<b>19</b>	75	1.58%	1	0.56%	23	1.24%	51	1.88%
<b>20</b>	102	2.15%	3	1.69%	42	2.27%	57	2.10%
<b>21</b>	176	3.71%	7	3.93%	66	3.56%	103	3.80%
<b>22</b>	176	3.71%	5	2.81%	69	3.72%	102	3.77%
<b>23</b>	200	4.22%	3	1.69%	76	4.10%	121	4.47%
<b>24</b>	200	4.22%	8	4.49%	84	4.53%	108	3.99%
<b>25-34</b>	1,471	31.03%	49	27.53%	585	31.57%	837	30.90%
<b>35-44</b>	886	18.69%	39	21.91%	347	18.73%	500	18.46%
<b>45-54</b>	609	12.85%	27	15.17%	226	12.20%	356	13.14%
<b>55-64</b>	469	9.89%	18	10.11%	197	10.63%	254	9.38%
<b>65-74</b>	185	3.90%	13	7.30%	66	3.56%	106	3.91%
<b>75 &amp; Older</b>	47	0.99%	0	0.00%	19	1.03%	28	1.03%
<b>Unknown</b>	43	0.91%	2	1.12%	15	0.81%	26	0.96%
<b>TOTAL</b>	<b>4,740</b>	<b>100.00%</b>	<b>178</b>	<b>100.00%</b>	<b>1,853</b>	<b>100.00%</b>	<b>2,709</b>	<b>100.00%</b>

**Table 6 – 10  
When Alcohol Related Crashes Occurred in 2019**

Time of Day	Total	Weekday	Weekend*
<b>Daytime**</b>	1,429	900	529
<b>Nighttime</b>	3,478	1,407	2,071
<b>Total</b>	<b>4,907</b>	<b>2,307</b>	<b>2,600</b>
*Weekend begins at 6:00 p.m. on Friday and continues until 6:00 a.m. Monday. All other times and days are considered Weekdays.			
**Daytime refers to the hours between 6:00 a.m. and 6:00 p.m.			

**Table 6 – 11  
Safety Device Usage for Drinking Drivers**

Severity of Injury	Safety Device Not Used	Lap Belt	Lap & Shoulder Belt	Protective Helmet	Other	Unknown	Totals
<b>No Injury</b>	108	27	2,070	2	1	866	3,074
<b>Unknown Injury</b>	7	0	38	0	0	128	173
<b>Possible Injury</b>	62	9	270	1	0	130	472
<b>Suspected Minor Injury</b>	134	1	351	12	0	149	647
<b>Suspected Serious Injury</b>	97	2	72	13	0	69	253
<b>Fatal Injury</b>	71	1	22	10	0	17	121
<b>TOTALS</b>	<b>479</b>	<b>40</b>	<b>2,823</b>	<b>38</b>	<b>1</b>	<b>1,359</b>	<b>4,740</b>

## Section 6: – Alcohol Related Crashes

Table 6 – 12

### Persons Killed and Injured in Alcohol Related Crashes

Age of Victim	Persons Killed			Persons Injured			
	Total	Male	Female	Total	Male	Female	Gender Unknown
0-4	1	0	1	41	21	20	0
5-9	1	0	1	38	20	18	0
10-14	0	0	0	44	22	22	0
15-19	7	5	2	184	101	83	0
20-24	29	20	9	471	313	158	0
25-34	55	36	19	808	525	283	0
35-44	60	45	15	504	327	177	0
45-54	47	31	16	371	242	129	0
55-64	34	28	6	297	189	108	0
65-74	20	15	5	129	86	43	0
75 & Older	2	1	1	48	25	23	0
Unknown	0	0	0	34	16	9	9
<b>TOTAL</b>	<b>256</b>	<b>181</b>	<b>75</b>	<b>2,969</b>	<b>1,887</b>	<b>1,073</b>	<b>9</b>

Table 6 – 13

### Alcohol Related Crashes by County

County	Number of Crashes				Number of Persons	
	Total	Fatal	Injury	PDO	Killed	Injured
Apache	28	8	10	10	12	23
Cochise	48	8	18	22	8	22
Coconino	172	11	82	79	16	123
Gila	46	2	33	11	2	39
Graham	28	2	9	17	2	11
Greenlee	8	1	2	5	1	4
La Paz	22	1	13	8	1	21
Maricopa	3,224	119	1,242	1,863	122	1,859
Mohave	167	10	54	103	11	89
Navajo	100	5	44	51	5	69
Pima	516	40	221	255	47	343
Pinal	225	16	105	104	18	162
Santa Cruz	13	1	3	9	1	4
Yavapai	182	7	85	90	7	119
Yuma	128	3	48	77	3	81
<b>TOTAL</b>	<b>4,907</b>	<b>234</b>	<b>1,969</b>	<b>2,704</b>	<b>256</b>	<b>2,969</b>

## Section 6: – Alcohol Related Crashes

Chart 6 – 1

### All Alcohol Related Crashes vs. Fatal Alcohol Related Crashes by Day of Week

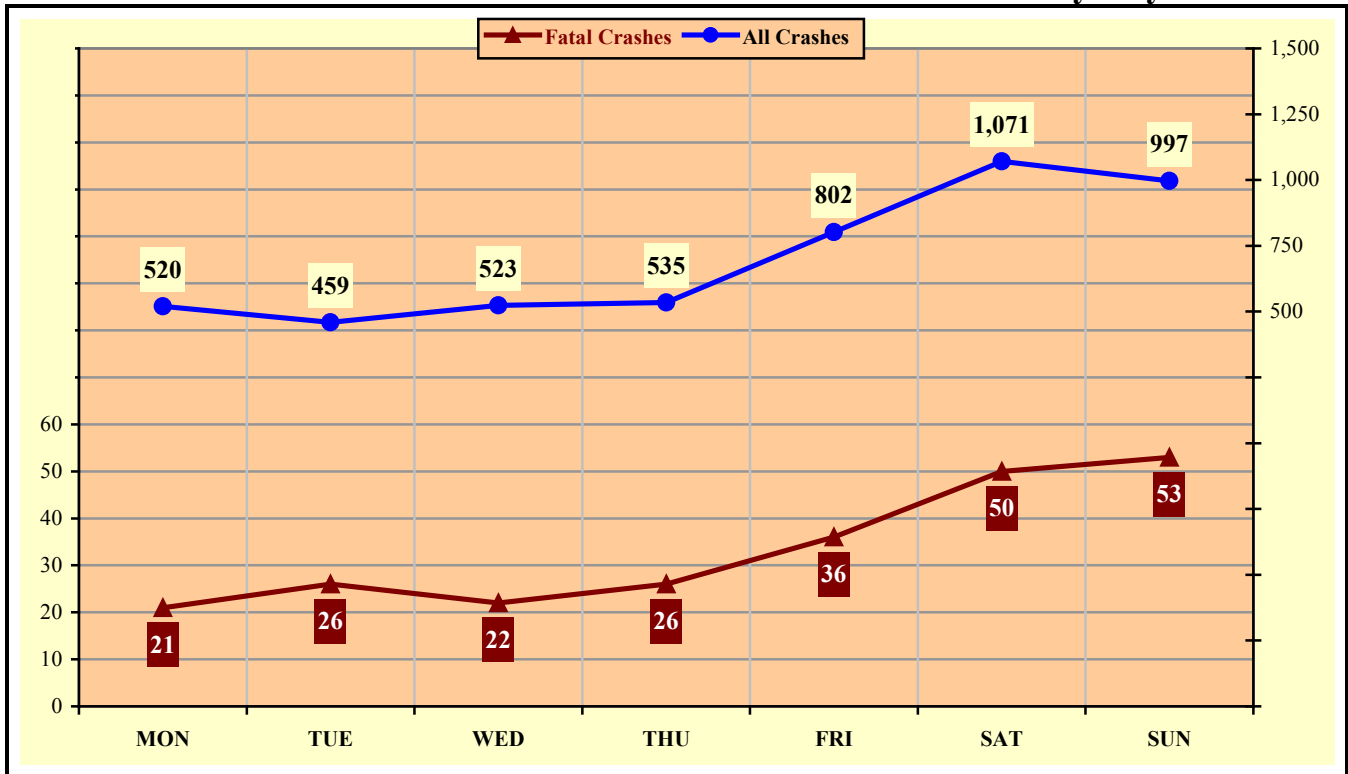
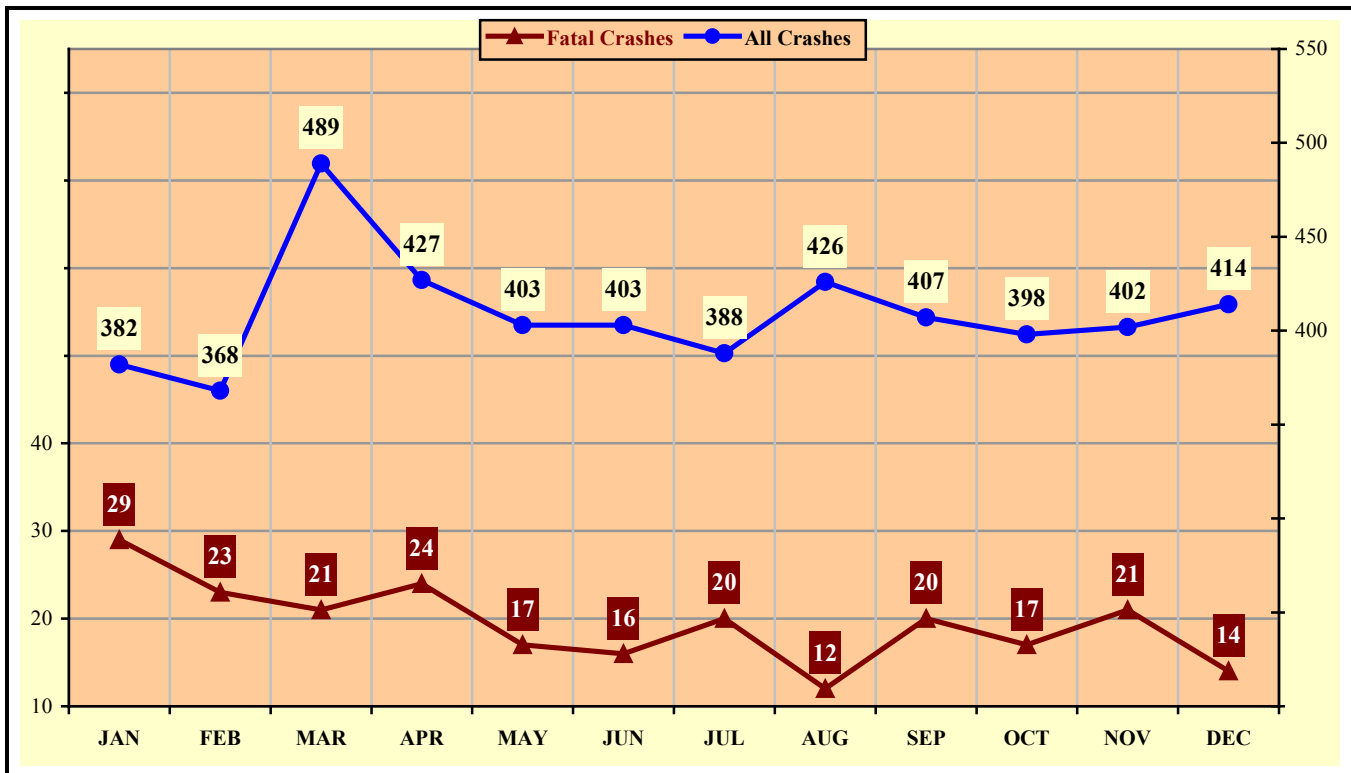


Chart 6 – 2

### All Alcohol Related Crashes vs. Fatal Alcohol Related Crashes by Month





## Section 6: – Alcohol Related Crashes

Chart 6 – 3

**All Alcohol Related Crashes vs. Fatal Alcohol Related Crashes - Weekdays**

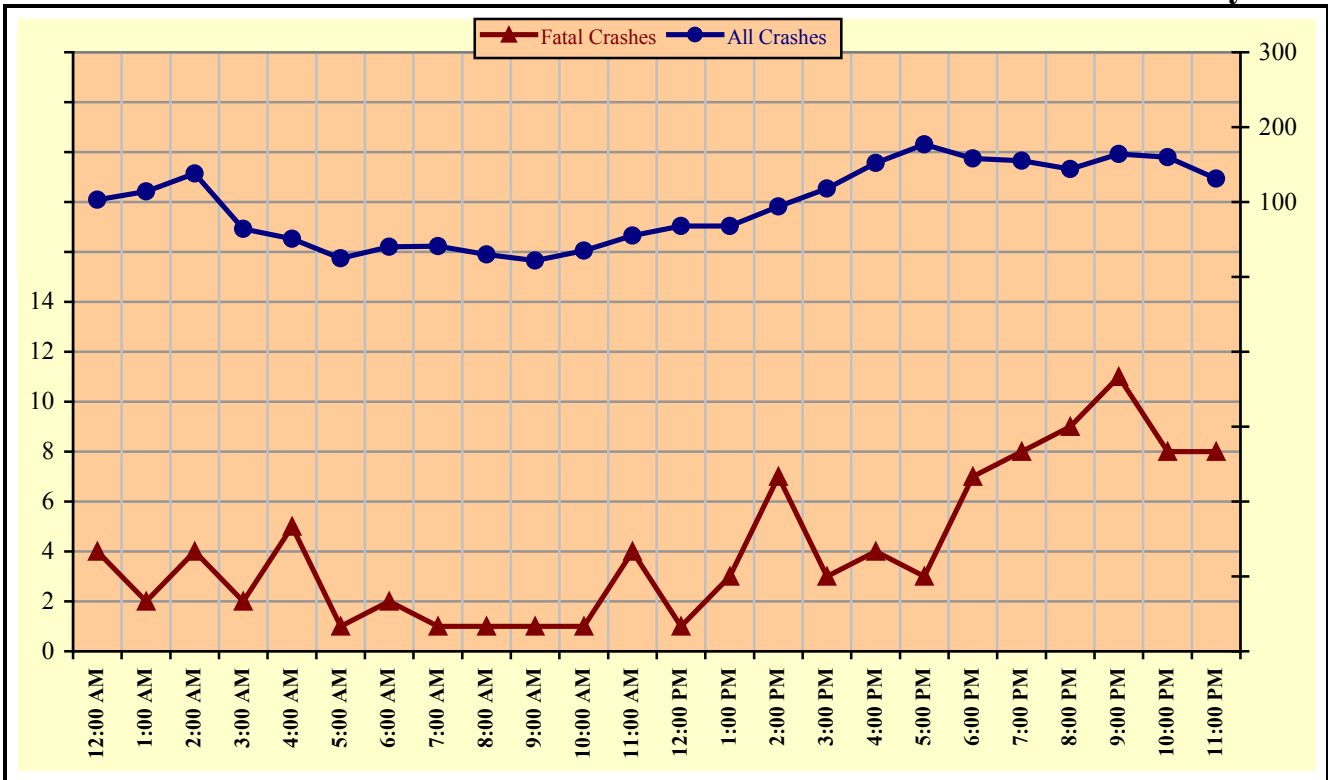
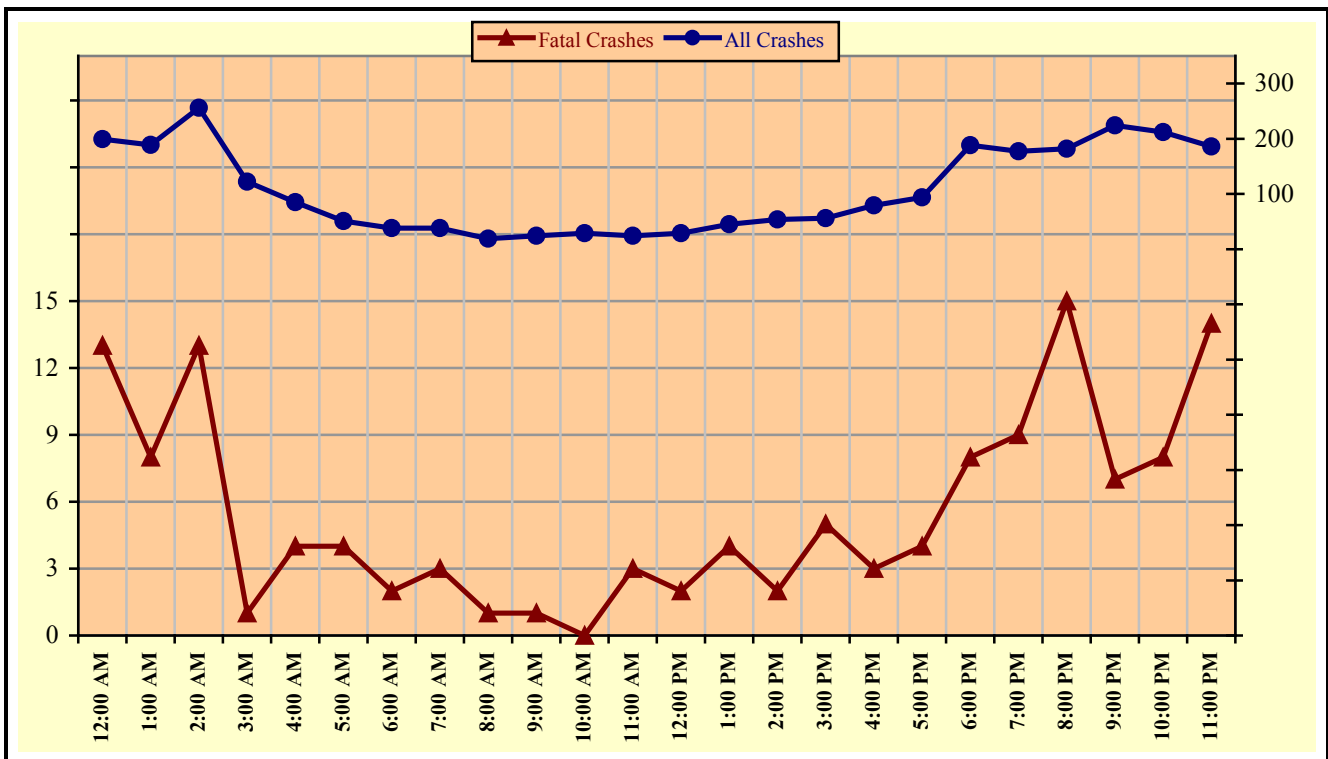


Chart 6 – 4

**All Alcohol Related Crashes vs. Fatal Alcohol Related Crashes - Weekends**



## Section 6: – Alcohol Related Crashes

Table 6 – 14

### Alcohol Related Crashes by Hour and Day of Week

Hour Beginning	Total Crashes		Monday		Tuesday		Wednesday		Thursday		Friday		Saturday		Sunday		Weekdays		Weekends	
	All	Fatal	All	Fatal	All	Fatal	All	Fatal	All	Fatal	All	Fatal	All	Fatal	All	Fatal	All	Fatal	All	Fatal
12:00 AM	302	17	35	3	24	1	21	0	23	1	35	2	74	4	90	6	103	4	199	13
1:00 AM	303	10	26	1	22	0	29	0	24	2	39	0	80	3	83	4	114	2	189	8
2:00 AM	394	17	28	0	25	0	19	0	38	0	56	4	113	7	115	6	138	4	256	13
3:00 AM	186	3	14	0	15	0	14	0	7	1	28	1	56	0	52	1	64	2	122	1
4:00 AM	136	9	12	0	12	1	15	1	8	1	16	2	39	3	34	1	51	5	85	4
5:00 AM	76	5	7	1	6	1	5	0	7	0	7	0	24	1	20	2	25	1	51	4
6:00 AM	78	4	9	0	7	1	8	0	8	1	8	0	19	0	19	2	40	2	38	2
7:00 AM	79	4	11	0	8	0	3	0	8	1	11	0	13	0	25	3	41	1	38	3
8:00 AM	49	2	4	0	4	0	7	0	11	1	4	0	12	1	7	0	30	1	19	1
9:00 AM	46	2	4	0	7	1	3	0	2	0	6	0	10	1	14	0	22	1	24	1
10:00 AM	64	1	11	0	7	0	4	1	5	0	8	0	12	0	17	0	35	1	29	0
11:00 AM	79	7	10	2	5	1	10	0	11	1	19	0	9	0	15	3	55	4	24	3
12:00 PM	97	3	13	0	13	0	19	0	12	0	11	1	17	0	12	2	68	1	29	2
1:00 PM	113	7	17	0	16	3	17	0	8	0	10	0	19	1	26	3	68	3	45	4
2:00 PM	148	9	19	1	15	2	20	2	16	2	24	0	25	1	29	1	94	7	54	2
3:00 PM	174	8	17	1	29	0	17	0	24	2	31	0	30	2	26	3	118	3	56	5
4:00 PM	231	7	30	2	25	0	35	0	31	2	31	0	34	1	45	2	152	4	79	3
5:00 PM	271	7	38	1	28	0	27	2	36	0	48	0	53	3	41	1	177	3	94	4
6:00 PM	346	15	35	2	32	1	45	2	46	2	60	2	73	4	55	2	158	7	188	8
7:00 PM	332	17	32	1	37	2	46	3	40	2	53	2	71	3	53	4	155	8	177	9
8:00 PM	326	24	38	2	28	3	47	3	31	1	58	5	73	5	51	5	144	9	182	15
9:00 PM	388	18	47	2	27	5	41	4	49	0	87	5	65	2	72	0	164	11	224	7
10:00 PM	372	16	39	1	31	1	35	2	55	4	67	5	83	3	62	0	160	8	212	8
11:00 PM	317	22	24	1	36	3	36	2	35	2	85	7	67	5	34	2	131	8	186	14
<b>TOTAL</b>	<b>4,907</b>	<b>234</b>	<b>520</b>	<b>21</b>	<b>459</b>	<b>26</b>	<b>523</b>	<b>22</b>	<b>535</b>	<b>26</b>	<b>802</b>	<b>36</b>	<b>1,071</b>	<b>50</b>	<b>997</b>	<b>53</b>	<b>2,307</b>	<b>100</b>	<b>2,600</b>	<b>134</b>

*Crashes during Weekends accounted for 52.99% of all Alcohol Related crashes and 57.26% of Alcohol Related Fatal Crashes.*

# ARIZONA

## MOTOR VEHICLE CRASH FACTS

### 2020





# 2020 Motor Vehicle Crash Facts for the State of Arizona

*Prepared by:  
The Arizona Department of Transportation  
Transportation Systems Management and Operations*

**Publication Date: July 27, 2021**



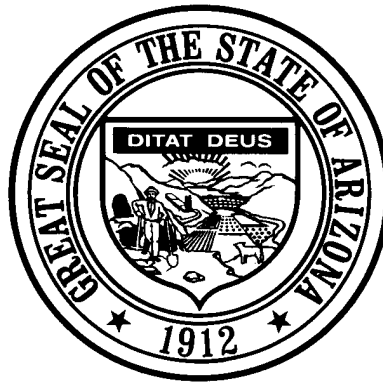
This publication is an annual statistical review of the motor vehicle crashes in the State of Arizona for the calendar year 2020. The results are compiled from Arizona Traffic Crash Reports submitted to the Arizona Department of Transportation by state, county, city, tribal, and other law enforcement agencies. Specific inquiries regarding the data in this report should be directed to:

**The Arizona Department of Transportation  
Transportation Systems Management and Operations  
Traffic Safety Section  
1615 West Jackson Street  
Phoenix, AZ 85007**

**E-mail: [azcrashfacts@azdot.gov](mailto:azcrashfacts@azdot.gov)**

In order to provide the most current information, preliminary data is utilized when necessary. For this reason, previous or future reports may differ slightly and we encourage you to refer to the latest issue of Motor Vehicle Crash Facts.

This issue as well as previous issues of this publication may be viewed and downloaded from the ADOT Web Site:  
[www.azdot.gov/crashfacts](http://www.azdot.gov/crashfacts)



**Douglas A. Ducey**  
Governor

**Arizona Department of Transportation**

**John S. Halikowski**  
Director

**State Transportation Board**

**Steve Stratton – District 4**  
Chairman

**Jesse Thompson – District 5**  
Vice Chairman

Members

**Jackie Meck – District 1**  
**Jenn Daniels – District 1**  
**Ted Maxwell – District 2**  
**Richard Searle – District 3**  
**Gary Knight – District 6**



## OVERVIEW

<b>Section 1: – Highlights and Historical Trends .....</b>	<b>1</b>
<b>Section 2: – Geographic Location.....</b>	<b>9</b>
<b>Section 3: – Crash Descriptions .....</b>	<b>17</b>
<b>Section 4: – Safety Devices .....</b>	<b>23</b>
<b>Section 5: – Motor Vehicle and Driver Descriptions .....</b>	<b>26</b>
<b>Section 6: – Alcohol Related Crashes.....</b>	<b>33</b>
<b>Section 7: – Pedestrian and Pedalcyclist Crashes .....</b>	<b>42</b>
<b>Section 8: – Motorcycle (MC) Crashes .....</b>	<b>48</b>
<b>Acknowledgements .....</b>	<b>58</b>

# 2020 Arizona Crash Facts Summary

## Table of Contents

<b>Section 1: Highlights and Historical Trends</b> .....	<b>1</b>
Arizona Crash Facts Summary and Comparison.....	2
Arizona at a Glance – 2020.....	2
Licensed Drivers, Motor Vehicle Registration and Crash History in Arizona.....	3
Historical Trends – VMT and Rates.....	3
Statewide Economic Loss Due to Motor Vehicle Crashes.....	4
State Adjusted Crash Costs.....	4
Traffic Crashes in Arizona by Year.....	5
Victims of Motor Vehicle Crashes.....	6
Suspected Serious Injuries by Person Type 2016-2020.....	6
Young Drivers (age 15-24) killed in crashes 2016-2020.....	6
State Highway System (SHS) vs Local Road Fatalities.....	7
Arizona Fatality Rate vs. Injury Rate.....	7
Traffic Fatalities by Geographic Region.....	7
Traffic Injuries by Geographic Region.....	7
Holiday Crash Statistics.....	8
<b>Section 2: Geographic Location</b> .....	<b>9</b>
Crash Severity by First Harmful Event Statewide.....	10
Crashes by County.....	10
Crash Severity by First Harmful Event in Urban Areas.....	11
Crash Severity by First Harmful Event in Rural Areas.....	11
Analysis by Jurisdiction.....	12
Total Fatalities by County for 2019 and 2020.....	15
Urban and Rural Crashes by Day of Week.....	16
Urban and Rural Fatal Crashes by Day of Week.....	16
All Urban and Rural Crashes vs. Urban and Rural Fatal Crashes by Month.....	16
<b>Section 3: Crash Descriptions</b> .....	<b>17</b>
Manner of Collision in Multi-Vehicle Crashes.....	18
Lighting Conditions.....	18
Weather Conditions.....	18
Road Surface Conditions.....	19
Roadway Grade.....	19
Roadway Alignment.....	19
All Crashes vs. Fatal Crashes by Time of Day - Weekdays.....	20
All Crashes vs. Fatal Crashes by Time of Day - Weekends.....	20
Crashes by Day of Week.....	21
Fatal Crashes by Day of Week.....	21
All Crashes vs. Fatal Crashes by Month.....	21
Crashes by Hour and Day of Week.....	22
<b>Section 4: Safety Devices</b> .....	<b>23</b>
Child Safety Device Usage (less than five years old).....	24
Driver Safety Device Usage.....	24
Passenger Safety Device Usage.....	24
Driver Safety Device Usage by Gender.....	25
Driver Safety Device Usage by Age.....	25
<b>Section 5: Motor Vehicle and Driver Descriptions</b> .....	<b>26</b>
Arizona Motor Vehicle Registrations.....	27
Motor Vehicle Crash Involvement by Vehicle Type.....	27
Hit and Run Drivers Involved in Crashes.....	28

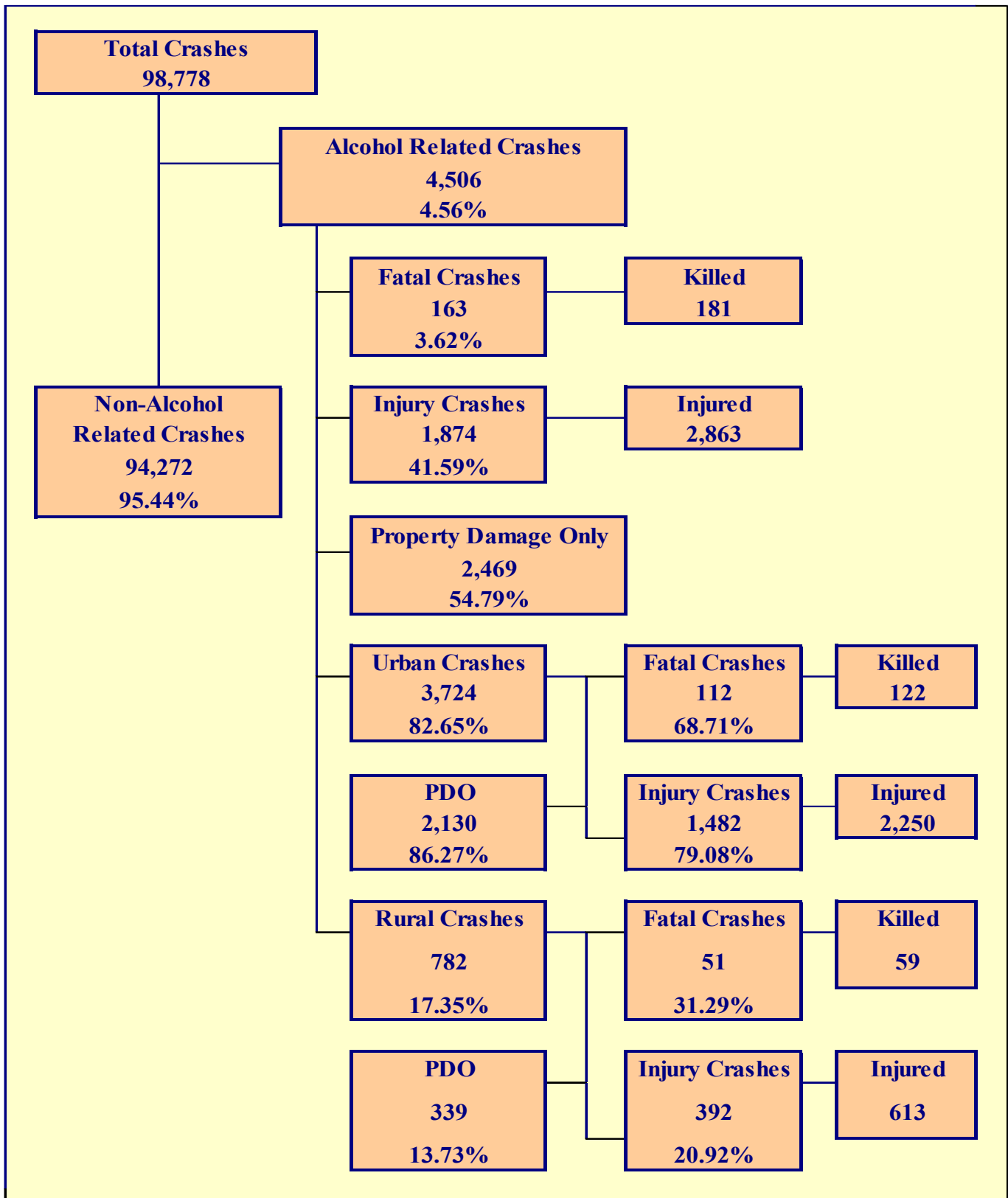
## 2020 Arizona Crash Facts Summary

Gender of Drivers Involved in Crashes.....	28
License Status of Drivers Involved in Crashes.....	28
Passengers Killed and Injured by Age and Gender.....	28
Drivers and Passengers Killed and Injured by Vehicle Type.....	29
Drivers Killed and Injured by Age and Gender.....	29
Licensed Drivers in Arizona by Age.....	30
Driver Involvement by Age.....	30
Driver Violations.....	31
Driver Physical Condition.....	31
Distracted Driving Behavior.....	32
Secondary Crashes.....	32
<b>Section 6: Alcohol Related Crashes.....</b>	<b>33</b>
Economic Loss Due to Alcohol Related Crashes in Arizona for 2020.....	34
Alcohol Related Crash History.....	34
Manner of Collision in Alcohol Related Crashes.....	34
Alcohol Related Crashes by First Harmful Event.....	35
Alcohol Related Crashes by Vehicle Type.....	35
Lighting Conditions in Alcohol Related Crashes.....	36
Road Surface Conditions in Alcohol Related Crashes.....	36
Gender of Drivers Involved in Alcohol Related Crashes.....	36
Driver Involvement by Age in Alcohol Related Crashes.....	37
When Alcohol Related Crashes Occurred in 2020.....	37
Safety Device Usage for Drinking Drivers.....	37
Persons Killed and Injured in Alcohol Related Crashes.....	38
Alcohol Related Crashes by County.....	38
All Alcohol Related Crashes vs. Fatal Alcohol Related Crashes by Day of Week.....	39
All Alcohol Related Crashes vs. Fatal Alcohol Related Crashes by Month.....	39
All Alcohol Related Crashes vs. Fatal Alcohol Related Crashes - Weekdays.....	40
All Alcohol Related Crashes vs. Fatal Alcohol Related Crashes - Weekends.....	40
Alcohol Related Crashes by Hour and Day of Week.....	41
<b>Section 7: Pedestrian and Pedalcyclist Crashes.....</b>	<b>42</b>
Pedestrians Killed and Injured By Age and Gender.....	43
Pedestrian Crashes by Geographic Location.....	43
Pedestrian Crash History.....	43
Pedestrians Killed by Age and Action.....	44
Pedestrians Injured by Age and Action.....	44
Pedestrian Physical Condition in Motor Vehicle Crashes.....	44
Lighting Conditions in Pedestrian Crashes.....	45
Weather Conditions in Pedestrian Crashes.....	45
Pedalcyclists Killed and Injured by Age and Gender.....	45
Pedalcycle Crashes by Geographic Location.....	46
Pedalcycle Crash History.....	46
Lighting Conditions in Pedalcyclist Crashes.....	46
Weather Conditions in Pedalcyclist Crashes.....	46
Pedestrian Crashes by County.....	47
Pedalcyclist Crashes by County.....	47
<b>Section 8: Motorcycle (MC) Crashes.....</b>	<b>48</b>
MC Fatalities by Year.....	49
MC Registrations in Arizona.....	49
Fatality Rate per Registered MC.....	49
Percent of MC Crashes to All Crashes.....	49
MC Crashes by First Harmful Event.....	50
Lighting Conditions in MC Crashes.....	50
Road Surface Conditions in MC Crashes.....	50
MC Crashes by Geographic Location.....	51

## 2020 Arizona Crash Facts Summary

---

Operator Involvement by Age in MC Crashes.....	51
MC Operator Physical Condition.....	51
Helmet Use by Gender.....	52
MC Operator’s Helmet Use.....	52
MC Passenger’s Helmet Use.....	52
MC Operators and Passengers Killed and Injured.....	53
MC Operator Violations.....	53
All MC Crashes vs. Fatal MC Crashes by Time of Day - Weekdays.....	54
All MC Crashes vs. Fatal MC Crashes by Time of Day - Weekends.....	54
All MC Crashes vs. Fatal MC Crashes by Day of Week.....	55
Alcohol Related MC Crashes vs. Fatal Alcohol Related MC Crashes by Day of Week.....	55
MC Crashes by Hour and Day of Week.....	56
MC Crashes by County.....	57
Manner of Collision in MC Crashes.....	57
<b>Acknowledgements.....</b>	<b>58</b>



## Section 6: – Alcohol Related Crashes

The statistics in the Alcohol Related section represent those crashes where the investigating officer indicated that a driver, pedestrian, or pedalcyclist had been drinking an alcoholic beverage and may or may not be substantiated by a blood or breath test. No assumption is to be made that the person was legally intoxicated (blood alcohol content of 0.08% or higher) at the time of the crash.

**Table 6 – 1  
Economic Loss Due to Alcohol Related Crashes in Arizona for 2020**

Fatalities	\$1,722,282,151
Suspected Serious Injuries	\$276,900,997
Suspected Minor Injuries	\$186,564,132
Possible Injuries	\$114,387,805
Property Damage Only	\$26,368,920
<b>TOTAL</b>	<b>\$2,326,504,005</b>

Refer to note on Page 4 for Economic Loss Estimates

**Table 6 – 2  
Alcohol Related Crash History**

Year	Alcohol Related Crashes	Percent of all Crashes	Persons Killed	Percent of all Fatalities	Persons Injured	Percent of all Injuries
<b>2016</b>	4,965	3.90%	302	31.72%	3,351	5.88%
<b>2017</b>	4,921	3.85%	325	32.57%	3,181	5.69%
<b>2018</b>	4,705	3.68%	265	26.21%	3,014	5.61%
<b>2019</b>	4,944	3.79%	258	26.33%	2,999	5.55%
<b>2020</b>	4,506	4.56%	181	17.12%	2,863	6.92%

**Table 6 – 3  
Manner of Collision in Alcohol Related Crashes**

Manner of Collision Type	Number of Crashes							
	Total	Percent of All Crashes	Fatal	Percent of Fatal Crashes	Injury	Percent of Injury Crashes	PDO	Percent of PDO Crashes
<b>Angle</b>	386	14.48%	17	14.53%	182	15.76%	187	13.42%
<b>Left Turn</b>	270	10.13%	7	5.98%	148	12.81%	115	8.26%
<b>Rear End</b>	1,062	39.85%	20	17.09%	444	38.44%	598	42.93%
<b>Head-On</b>	192	7.20%	16	13.68%	87	7.53%	89	6.39%
<b>Sideswipe (same)</b>	343	12.87%	3	2.56%	111	9.61%	229	16.44%
<b>Sideswipe (opposite)</b>	125	4.69%	8	6.84%	29	2.51%	88	6.32%
<b>U-Turn</b>	12	0.45%	0	0.00%	6	0.52%	6	0.43%
<b>Other*</b>	260	9.76%	46	39.32%	144	12.47%	70	5.03%
<b>Unknown</b>	15	0.56%	0	0.00%	4	0.35%	11	0.79%
<b>TOTAL</b>	<b>2,665</b>	<b>100.00%</b>	<b>117</b>	<b>100.00%</b>	<b>1,155</b>	<b>100.00%</b>	<b>1,393</b>	<b>100.00%</b>

Note: Includes only multi-vehicle alcohol related crashes

\*Other includes pedestrian and pedalcyclist crashes

## Section 6: – Alcohol Related Crashes

Table 6 – 4

### Alcohol Related Crashes by First Harmful Event

First Harmful Event Type	Number of Crashes				Number of Persons	
	Total	Fatal	Injury	PDO	Killed	Injured
Collision with Motor Vehicle in Transport	2,032	63	911	1,058	75	1,668
Overturning	170	13	122	35	15	159
Collision with Pedestrian	140	35	105	0	35	114
Collision with Pedalcyclist	13	4	9	0	4	10
Collision with Animal	3	1	1	1	1	1
Collision with Fixed Object	1,667	41	610	1,016	45	763
Collision with Non-fixed Object*	438	6	96	336	6	117
Vehicle Fire or Explosion	2	0	0	2	0	0
Other Non-collision**	5	0	4	1	0	4
Unknown	36	0	16	20	0	27
<b>TOTAL</b>	<b>4,506</b>	<b>163</b>	<b>1,874</b>	<b>2,469</b>	<b>181</b>	<b>2,863</b>
*Includes Collision with Parked Vehicles, Trains, Railway Vehicles, and Work Zone Equipment						
**Includes Vehicle Immersion, Jackknife, and Cargo Loss or Shift						

Table 6 – 5

### Alcohol Related Crashes by Vehicle Type

Motor Vehicle Type	Number of Vehicles				
	Total	Percent of Total	In Fatal Crashes	In Injury Crashes	In PDO Crashes
Passenger Cars (Sedans, Convertibles, etc.)	2,420	54.938%	54	943	1,423
Station Wagons	727	16.504%	28	290	409
Pickup Trucks	744	16.890%	28	312	404
Vans	46	1.044%	2	20	24
Truck Tractor (with or without Semi-Trailer)	3	0.068%	0	3	0
Concrete Mixer Trucks	0	0.000%	0	0	0
Dump Trucks	0	0.000%	0	0	0
Garbage Trucks	0	0.000%	0	0	0
Tanker Trucks	0	0.000%	0	0	0
Wrecker or Tow Trucks	0	0.000%	0	0	0
Other Truck Combinations	140	3.178%	0	47	93
School Bus	1	0.023%	0	0	1
Commercial or Non-Commercial Bus	0	0.000%	0	0	0
Motorcycle (two or three wheel)	106	2.406%	20	80	6
All Terrain Vehicle or Cycle	20	0.454%	5	13	2
Golf Carts	2	0.045%	0	2	0
Moped	2	0.045%	1	1	0
Recreational Vehicle	1	0.023%	0	1	0
Motor Home or House Car	0	0.000%	0	0	0
Fire Trucks	0	0.000%	0	0	0
Ambulances	1	0.023%	0	0	1
Other Types Of Vehicles	3	0.068%	0	1	2
Vehicle Type Unknown	189	4.291%	1	75	113
<b>TOTAL</b>	<b>4,405</b>	<b>100.00%</b>	<b>139</b>	<b>1,788</b>	<b>2,478</b>



## Section 6: – Alcohol Related Crashes

**Table 6 – 6**  
**Lighting Conditions in Alcohol Related Crashes**

Type of Lighting Conditions	Number of Crashes				Number of Persons	
	Total	Fatal	Injury	PDO	Killed	Injured
Daylight	1,392	39	593	760	43	919
Dawn	60	2	24	34	2	39
Dusk	151	6	61	84	8	108
Dark - Lighted	2,225	71	877	1,277	76	1,310
Dark - Not Lighted	628	41	301	286	46	461
Dark - Unknown Lighting	32	3	12	17	5	14
Unknown	18	1	6	11	1	12
<b>TOTAL</b>	<b>4,506</b>	<b>163</b>	<b>1,874</b>	<b>2,469</b>	<b>181</b>	<b>2,863</b>

**Table 6 – 7**  
**Road Surface Conditions in Alcohol Related Crashes**

Type of Road Surface Condition	Number of Drivers				Number of Persons	
	Total	In Fatal Crashes	In Injury Crashes	In PDO Crashes	Killed	Injured
Dry	4,214	126	1,720	2,368	163	2,734
Wet	120	4	48	68	5	84
Snow/Slush	3	0	1	2	0	3
Ice/Frost	11	0	2	9	0	4
Water (standing or moving)	3	0	0	3	0	0
Mud, Dirt, Gravel, Sand	23	1	10	12	1	18
Other	4	0	2	2	0	2
Unknown	27	8	5	14	12	18
<b>TOTAL</b>	<b>4,405</b>	<b>139</b>	<b>1,788</b>	<b>2,478</b>	<b>181</b>	<b>2,863</b>

**Table 6 – 8**  
**Gender of Drivers Involved in Alcohol Related Crashes**

Gender of Driver	Number of Drivers							
	Total	Percent of Total	In Fatal Crashes	Percent of Fatal	In Injury Crashes	Percent of Injury	In PDO Crashes	Percent of PDO
Male	3,230	73.33%	112	80.58%	1,328	74.27%	1,790	72.24%
Female	1,147	26.04%	27	19.42%	451	25.22%	669	27.00%
Unknown	28	0.64%	0	0.00%	9	0.50%	19	0.77%
<b>TOTAL</b>	<b>4,405</b>	<b>100.00%</b>	<b>139</b>	<b>100.00%</b>	<b>1,788</b>	<b>100.00%</b>	<b>2,478</b>	<b>100.00%</b>

*In total crashes across the state, 55% of the drivers were males.  
When alcohol was involved, males accounted for 73.33% of the drivers.*

## Section 6: – Alcohol Related Crashes

Table 6 – 9  
**Driver Involvement by Age in Alcohol Related Crashes**

Driver Age Group	Number of Drivers							
	Total	Percent of Total	In Fatal Crashes	Percent of Fatal	In Injury Crashes	Percent of Injury	In PDO Crashes	Percent of PDO
15 & Under	6	0.14%	1	0.72%	0	0.00%	5	0.20%
16	17	0.39%	1	0.72%	5	0.28%	11	0.44%
17	25	0.57%	0	0.00%	11	0.62%	14	0.56%
18	64	1.45%	3	2.16%	21	1.17%	40	1.61%
19	71	1.61%	3	2.16%	24	1.34%	44	1.78%
20	101	2.29%	0	0.00%	54	3.02%	47	1.90%
21	156	3.54%	4	2.88%	68	3.80%	84	3.39%
22	187	4.25%	7	5.04%	75	4.19%	105	4.24%
23	155	3.52%	9	6.47%	65	3.64%	81	3.27%
24	176	4.00%	5	3.60%	82	4.59%	89	3.59%
25-34	1,436	32.60%	39	28.06%	596	33.33%	801	32.32%
35-44	872	19.80%	30	21.58%	342	19.13%	500	20.18%
45-54	500	11.35%	12	8.63%	206	11.52%	282	11.38%
55-64	423	9.60%	17	12.23%	161	9.00%	245	9.89%
65-74	139	3.16%	4	2.88%	57	3.19%	78	3.15%
75 & Older	27	0.61%	4	2.88%	6	0.34%	17	0.69%
Unknown	50	1.14%	0	0.00%	15	0.84%	35	1.41%
<b>TOTAL</b>	<b>4,405</b>	<b>100.00%</b>	<b>139</b>	<b>100.00%</b>	<b>1,788</b>	<b>100.00%</b>	<b>2,478</b>	<b>100.00%</b>

Table 6 – 10  
**When Alcohol Related Crashes Occurred in 2020**

Time of Day	Total	Weekday	Weekend*
Daytime**	1,288	805	483
Nighttime	3,218	1,342	1,876
<b>Total</b>	<b>4,506</b>	<b>2,147</b>	<b>2,359</b>
*Weekend begins at 6:00 p.m. on Friday and continues until 6:00 a.m. Monday. All other times and days are considered Weekdays.			
**Daytime refers to the hours between 6:00 a.m. and 6:00 p.m.			

Table 6 – 11  
**Safety Device Usage for Drinking Drivers**

Severity of Injury	Safety Device Not Used	Lap Belt	Lap & Shoulder Belt	Protective Helmet	Other	Unknown	Totals
No Injury	116	35	1,826	4	4	830	2,815
Unknown Injury	4	0	40	0	0	129	173
Possible Injury	44	6	282	0	0	131	463
Suspected Minor Injury	132	2	345	9	1	154	643
Suspected Serious Injury	100	1	63	15	0	67	246
Fatal Injury	32	1	12	8	0	12	65
<b>TOTALS</b>	<b>428</b>	<b>45</b>	<b>2,568</b>	<b>36</b>	<b>5</b>	<b>1,323</b>	<b>4,405</b>

## Section 6: – Alcohol Related Crashes

Table 6 – 12

### Persons Killed and Injured in Alcohol Related Crashes

Age of Victim	Persons Killed			Persons Injured			
	Total	Male	Female	Total	Male	Female	Gender Unknown
0-4	0	0	0	40	24	16	0
5-9	2	1	1	36	18	18	0
10-14	5	1	4	53	24	29	0
15-19	9	6	3	212	124	88	0
20-24	26	22	4	462	288	174	0
25-34	33	27	6	793	513	280	0
35-44	34	23	11	502	346	156	0
45-54	26	17	9	332	213	119	0
55-64	32	25	7	260	169	91	0
65-74	10	7	3	105	68	37	0
75 & Older	4	1	3	36	22	14	0
Unknown	0	0	0	32	21	5	6
<b>TOTAL</b>	<b>181</b>	<b>130</b>	<b>51</b>	<b>2,863</b>	<b>1,830</b>	<b>1,027</b>	<b>6</b>

Table 6 – 13

### Alcohol Related Crashes by County

County	Number of Crashes				Number of Persons	
	Total	Fatal	Injury	PDO	Killed	Injured
Apache	30	3	20	7	3	29
Cochise	30	2	10	18	2	11
Coconino	159	7	76	76	8	109
Gila	77	1	47	29	1	87
Graham	29	3	12	14	5	27
Greenlee	2	0	1	1	0	3
La Paz	27	3	12	12	4	20
Maricopa	2,834	74	1,115	1,645	81	1,730
Mohave	173	9	78	86	10	117
Navajo	66	7	29	30	7	42
Pima	578	43	242	293	48	350
Pinal	187	4	95	88	4	147
Santa Cruz	9	0	4	5	0	5
Yavapai	193	5	88	100	6	117
Yuma	112	2	45	65	2	69
<b>TOTAL</b>	<b>4,506</b>	<b>163</b>	<b>1,874</b>	<b>2,469</b>	<b>181</b>	<b>2,863</b>

## Section 6: – Alcohol Related Crashes

Chart 6 – 1

### All Alcohol Related Crashes vs. Fatal Alcohol Related Crashes by Day of Week

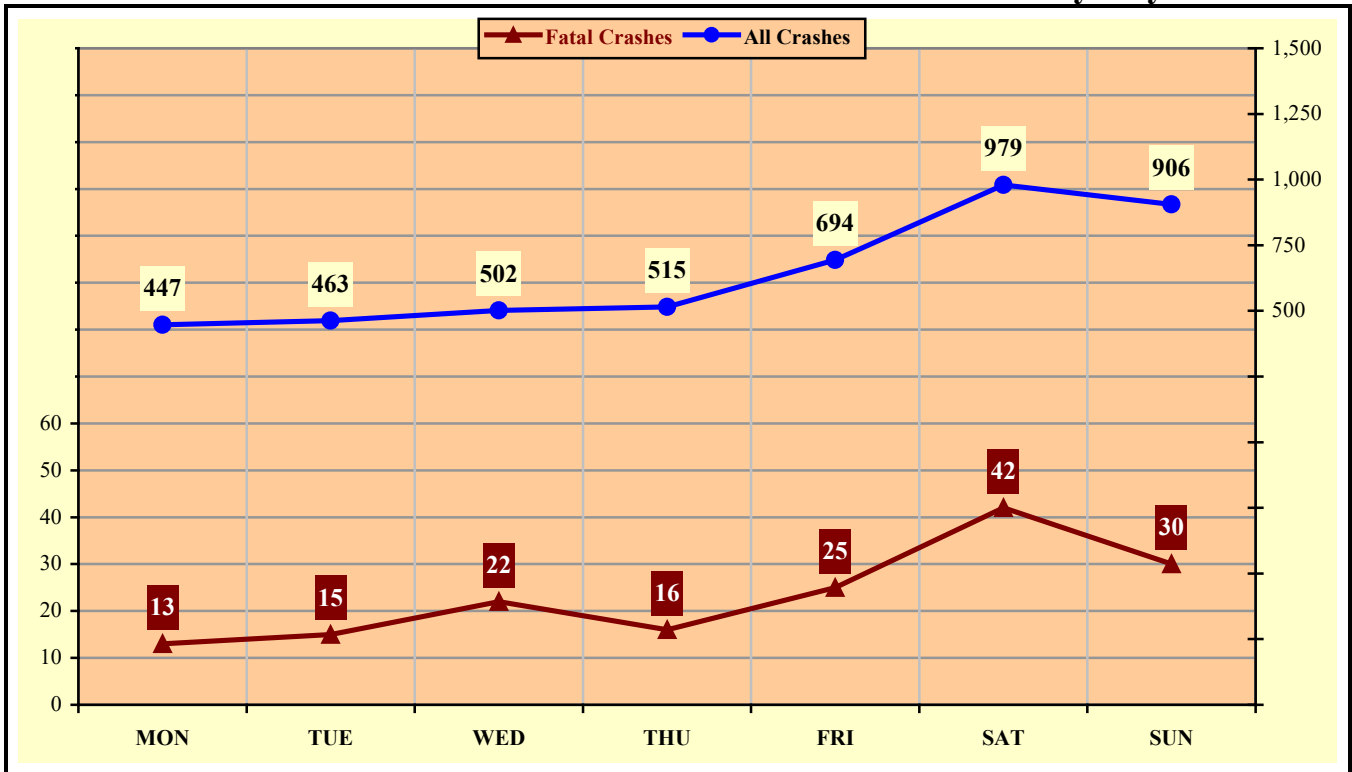
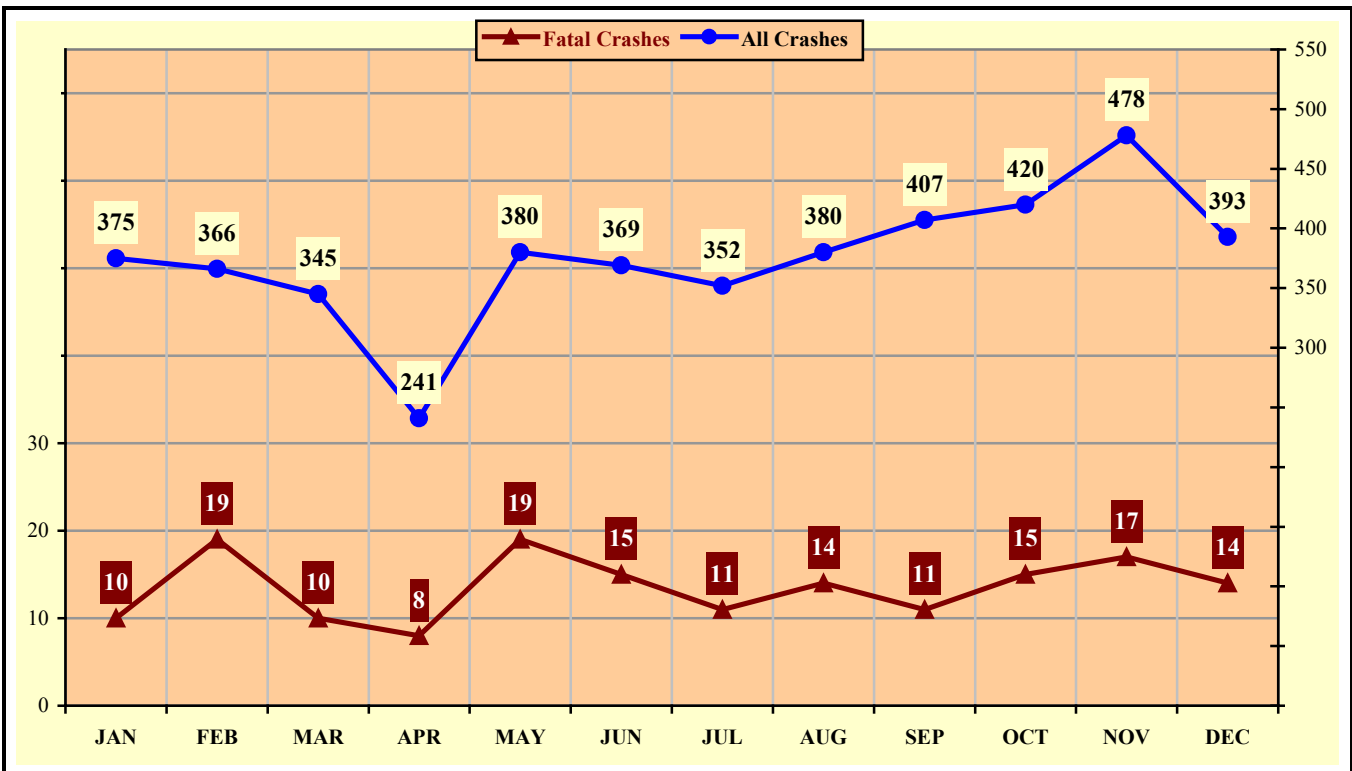


Chart 6 – 2

### All Alcohol Related Crashes vs. Fatal Alcohol Related Crashes by Month



## Section 6: – Alcohol Related Crashes

Chart 6 – 3

**All Alcohol Related Crashes vs. Fatal Alcohol Related Crashes - Weekdays**

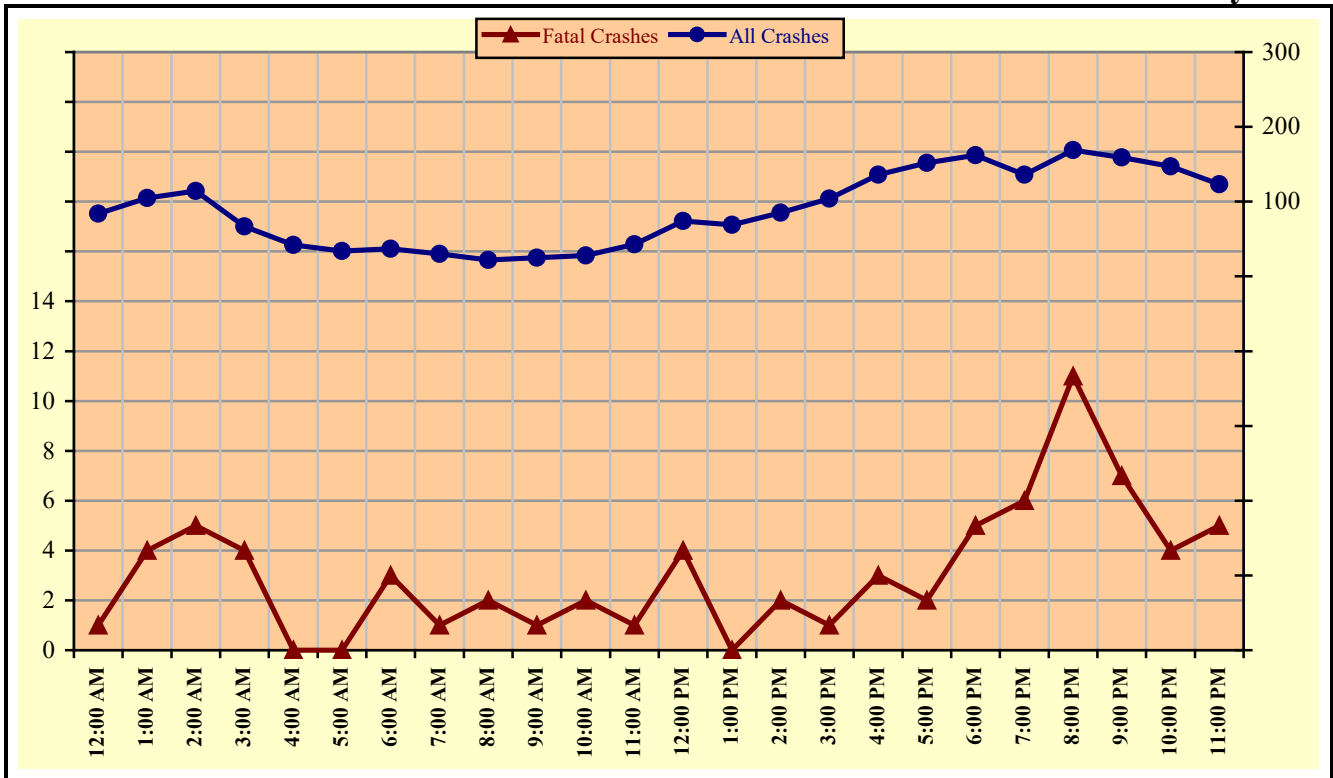
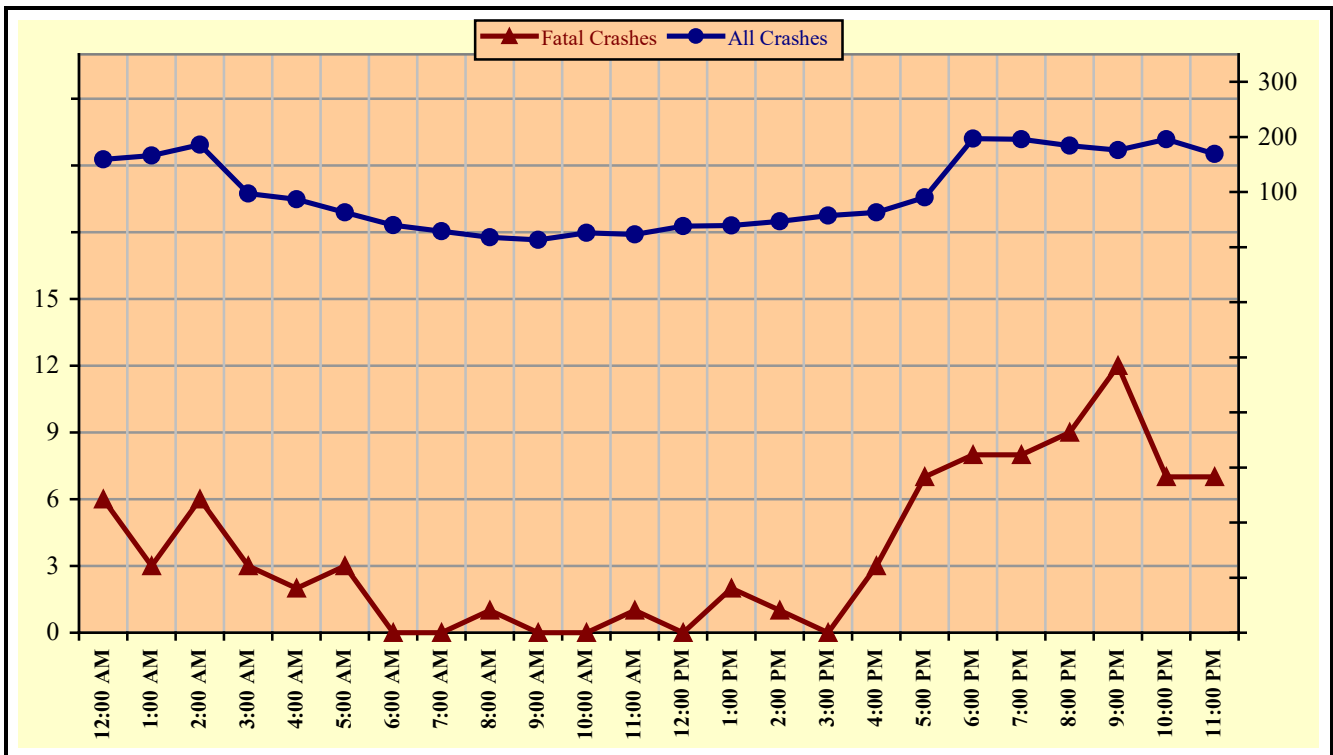


Chart 6 – 4

**All Alcohol Related Crashes vs. Fatal Alcohol Related Crashes - Weekends**



## Section 6: – Alcohol Related Crashes

Table 6 – 14

**Alcohol Related Crashes by Hour and Day of Week**

Hour Beginning	Total Crashes		Monday		Tuesday		Wednesday		Thursday		Friday		Saturday		Sunday		Weekdays		Weekends	
	All	Fatal	All	Fatal	All	Fatal	All	Fatal	All	Fatal	All	Fatal	All	Fatal	All	Fatal	All	Fatal	All	Fatal
12:00 AM	243	7	31	0	18	0	16	0	26	1	24	0	58	2	70	4	84	1	159	6
1:00 AM	271	7	23	0	16	0	27	1	22	0	40	3	57	1	86	2	105	4	166	3
2:00 AM	300	11	27	2	24	1	26	2	26	1	38	1	75	1	84	3	114	5	186	6
3:00 AM	164	7	16	0	10	2	19	1	18	1	20	0	38	1	43	2	67	4	97	3
4:00 AM	129	2	13	0	6	0	13	0	12	0	11	0	31	0	43	2	42	0	87	2
5:00 AM	97	3	6	0	6	0	7	0	5	0	16	0	25	2	32	1	34	0	63	3
6:00 AM	77	3	6	1	5	0	7	1	8	1	11	0	22	0	18	0	37	3	40	0
7:00 AM	59	1	10	0	4	0	10	1	2	0	4	0	15	0	14	0	30	1	29	0
8:00 AM	40	3	2	1	5	0	6	0	3	0	6	1	9	1	9	0	22	2	18	1
9:00 AM	38	1	2	0	7	1	5	0	4	0	7	0	7	0	6	0	25	1	13	0
10:00 AM	54	2	6	0	7	0	6	1	6	1	3	0	10	0	16	0	28	2	26	0
11:00 AM	66	2	8	1	8	0	10	0	11	0	6	0	14	1	9	0	43	1	23	1
12:00 PM	112	4	16	1	12	0	10	0	17	1	19	2	16	0	22	0	74	4	38	0
1:00 PM	108	2	15	0	9	0	12	0	18	0	15	0	23	1	16	1	69	0	39	2
2:00 PM	132	3	15	1	26	0	11	0	16	0	17	1	22	0	25	1	85	2	47	1
3:00 PM	161	1	15	0	26	0	24	1	20	0	19	0	22	0	35	0	104	1	57	0
4:00 PM	199	6	29	1	31	1	26	0	18	0	32	1	38	2	25	1	136	3	63	3
5:00 PM	242	9	20	0	25	0	31	1	28	0	48	1	52	5	38	2	152	2	90	7
6:00 PM	359	13	40	0	41	1	45	2	36	2	57	0	80	6	60	2	162	5	197	8
7:00 PM	332	14	30	0	28	1	35	3	43	2	64	3	69	5	63	0	136	6	196	8
8:00 PM	353	20	36	2	39	3	44	3	50	3	45	4	79	4	60	1	169	11	184	9
9:00 PM	335	19	28	1	45	3	38	2	48	1	62	2	67	6	47	4	159	7	176	12
10:00 PM	343	11	31	0	34	1	42	3	40	0	73	5	77	0	46	2	147	4	196	7
11:00 PM	292	12	22	2	31	1	32	0	38	2	57	1	73	4	39	2	123	5	169	7
<b>TOTAL</b>	<b>4,506</b>	<b>163</b>	<b>447</b>	<b>13</b>	<b>463</b>	<b>15</b>	<b>502</b>	<b>22</b>	<b>515</b>	<b>16</b>	<b>694</b>	<b>25</b>	<b>979</b>	<b>42</b>	<b>906</b>	<b>30</b>	<b>2,147</b>	<b>74</b>	<b>2,359</b>	<b>89</b>

*Crashes during Weekends accounted for 52.35% of all Alcohol Related crashes and 54.60% of Alcohol Related Fatal Crashes.*